

ADVENTURE MOTORSPORTS & RACES - EXPEDITIONS - OUTDOORSports  
PHOTOGRAPHY - TV & VIDEO PRODUCTION - ADVERTISING DESIGN

# *Xtreme* ADVENTURE REPORTS

INFORMATION

PRESENTATION





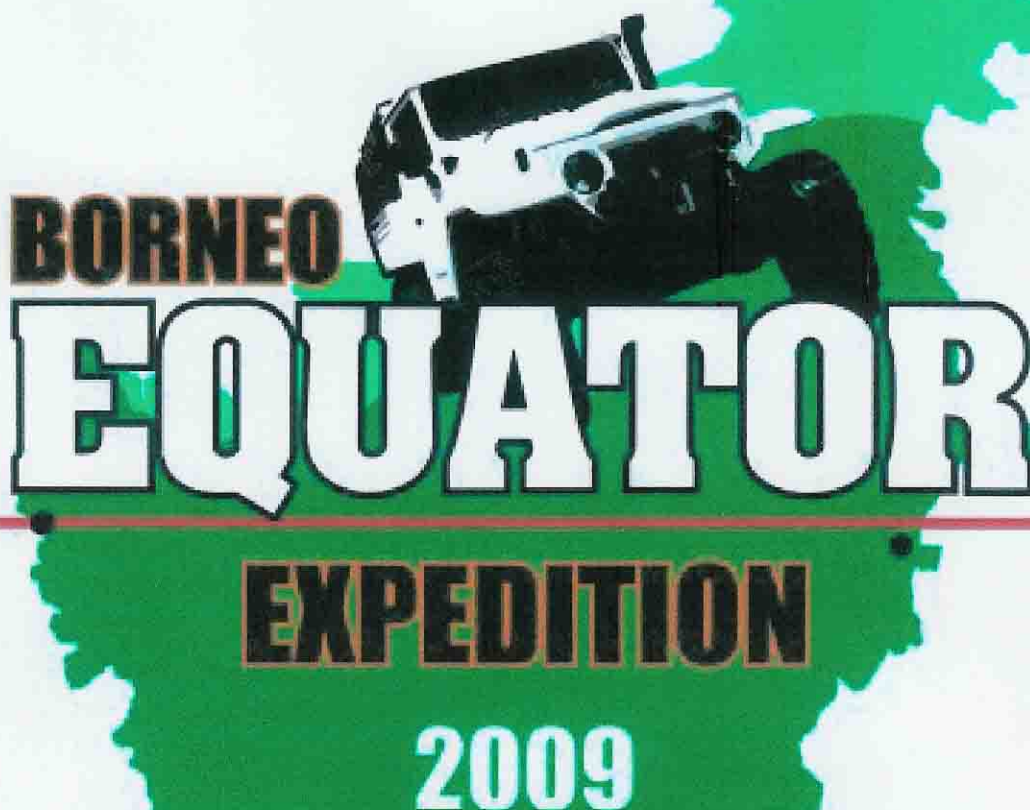


# *Xtreme* ADVENTURE REPORTS

ADVENTURE MOTORSPORTS & RACES - EXPEDITIONS - OUTDOORSPOOTS  
PHOTOGRAPHY - TV & VIDEO PRODUCTION - ADVERTISING DESIGN

INFORMATION

PRESENTATION



# BORNEO EQUATOR EXPEDITION 2009

**CHEETAH**  
OFF-ROAD



*Xtreme*  
**ADVENTURE**  
WWW.XTREME-ADVENTURE.COM

**IOF**  
INDONESIAN OFF-ROAD FEDERATION



VAN BEMMELSTRAAT 48 - NL-3818 PD AMERSFOORT  
HOLLAND - NETHERLANDS - EUROPE  
PHONE: +31 (0)6 53 24 49 61 - FAX: +31 (0)33 461 2509  
E-MAIL: FRED . M . KRIJGSMAN @ XTREME - ADVENTURE . COM  
WWW.XTREME - ADVENTURE . COM

MEMBER OF THE NETHERLANDS ASSOCIATION OF JOURNALISTS/PHOTOJOURNALISTS (NVJ/NVF)  
BTW N° / VAT N°: NL 1111 64 606 B01 - CHAMBER OF COMMERCE: 32071332







# *Xtreme* ADVENTURE REPORTS

ADVENTURE MOTORSPORTS & RACES - EXPEDITIONS - OUTDOORSports  
PHOTOGRAPHY - TV & VIDEO PRODUCTION - ADVERTISING DESIGN

INFORMATION

PRESENTATION

## **BORNEO EQUATOR EXPEDITION 2009** **DECEMBER 6<sup>th</sup> till DECEMBER 20<sup>th</sup> 2009**

### **RESPECTING THE ENVIRONMENT, MUTUAL COOPERATION AND SPORTSMANSHIP**

The year **2009** will be our *Ninth* Adventure Off-Road event, with the **BORNEO EQUATOR EXPEDITION 2009, West Borneo – Central Borneo – East Borneo** being held on **DECEMBER 6<sup>th</sup> till DECEMBER 20<sup>th</sup> 2009**. The event will start from Pontianak, West Borneo, travel through Central Borneo and finish in Balikpapan, East Borneo, covering about 1500 km. Participants from Asia, Europe, America and Australia will be invited to participate in this event.

The event is a yearly calendar event held with the support of the Indonesian Off-Road Federation (IOF) and The Ministry of Culture and Tourism.

#### **About Event Organizer :**

The event organizer is **PT.Cheetah Lintas Alam (CHEETAH OFF-ROAD CLUB)**, established in 2001, a member of the Indonesian Off-Road Federation (IOF). The founders are: **Justinus Sjahlim, Syamsir Alam, Yuma Wiranatakusumah and Hendrik Badu**. The **BORNEO EQUATOR EXPEDITION 2009** event idea came together with **Fred M.Krijgsman** of **Xtreme Adventure** to create a "once in a live time adventure" expedition.

#### **ABOUT OUR PAST EVENTS:**

##### **JAVA CHALLENGE 2001, December 27, 2001 – January 3, 2002**

Route : Jakarta – West Java – Parang Tritis, Central Java. Distance : 800 km.

##### **JAVA CHALLENGE 2002, December 15 – 21, 2002**

Route : Jakarta – West Java – Anyer, Banten Province. Distance : 700 km

1.

##### **NUSANTARA CHALLENGE 2003, December 14 – 21, 2003**

Route : Surabaya, East Java – Denpasar, Bali Province. Distance : 800 km.

##### **DIPLOMAT CHALLENGE Of INDONESIA 2004 ( DCI 2004 ) December 11 – 19, 2004**

Route : Pekanbaru, Riau Province – Padang, West Sumatera. Distance : 800 km.

##### **DIPLOMAT CHALLENGE Of INDONESIA 2005 ( DCI 2005 ) December 8 – 18, 2005**

Route : Banjarmasin, South Kalimantan (Borneo) - Palangka Raya, Central Kalimantan - Balikpapan, East Kalimantan.  
Distance: 1000 km.

##### **DIPLOMAT CHALLENGE Of INDONESIA 2006 ( DCI 2006 ) December 7 – 17, 2006**

Route : Kendari, South East Sulawesi ( Celebes ) – Makassar, South Sulawesi. Distance : 1400 km.

##### **NUSANTARA CHALLENGE Of INDONESIA 2008 ( NCI 2008 ) January 17 – 27, 2008**

Route : Sumbawa Besar, West Nusa Tenggara – Mataram, Lombok – Denpasar, Bali. Distance : 850 km

##### **NUSANTARA SUPER XTREME CHALLENGE 2009 ( NSXC 2009 ) February 22 – March 01, 2009**

Route HEAVY TRACK: Subang to Ciater, West Java. Distance : 100 km

VAN BEMMELSTRAAT 48 - NL-3818 PD AMERSFOORT

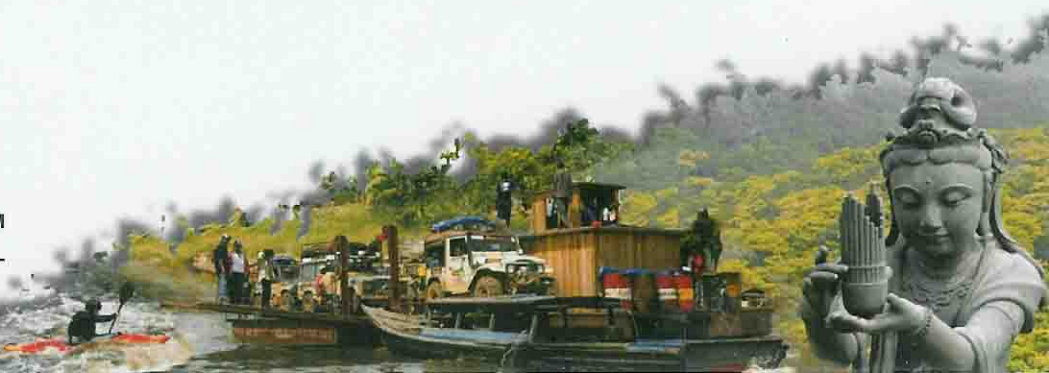
HOLLAND - NETHERLANDS - EUROPE

PHONE: +31 (0)6 53 24 49 61 - FAX: +31 (0)33 461 2509

E-MAIL: FRED . M . KRIJGSMAN @ XTREME - ADVENTURE . COM

WWW.XTREME-ADVENTURE.COM

MEMBER OF THE NETHERLANDS ASSOCIATION OF JOURNALISTS/PHOTOJOURNALISTS (NVJ/NVF)  
BTW N° / VAT N°: NL 1111 64 606 B01 - CHAMBER OF COMMERCE: 32071332







# *Xtreme* ADVENTURE REPORTS

ADVENTURE MOTORSPORTS & RACES - EXPEDITIONS - OUTDOORSports  
PHOTOGRAPHY - TV & VIDEO PRODUCTION - ADVERTISING DESIGN

INFORMATION

## PRESENTATION

### BORNEO EQUATOR EXPEDITION 2009 ( BEE 2009 ) December 06 – 20, 2009

Route : Pontianak, West Kalimantan ( Borneo ) – Central Kalimantan – Balikpapan, East Kalimantan. Distance : 1500 km.

The mission of this event is not only to enjoy the once in a " life time adventure ", but also to mutually enjoy the scenic drive through mountainous areas, rivers, etc and to promote tourist spots and learn more about the diverse Indonesian culture. Building relationships between people from across the globe as well as building mutual trust and understanding among one another is also part of our mission.

### RESPECTING THE ENVIRONMENT, MUTUAL COOPERATION AND SPORTSMANSHIP

**THE DATE: DECEMBER 6<sup>th</sup> till DECEMBER 20<sup>th</sup> 2009**



**The event route will be along the EQUATOR, or no farther than 1 degree either side of the EQUATOR line.**

### TRAVELING DISTANCE

**1500 Km.** Start from the **EQUATOR**, Pontianak City, West Kalimantan thru Central Kalimantan and Finish at Balikpapan, East Kalimantan.

### THE ROUTE :

The event route will be along the **EQUATOR**, or no farther than 1 degree either side of the **EQUATOR** line.

### THE ITERINERY

The opening ceremony will be held on December 06, 2009 at 9 am in Pontianak, West Kalimantan. Travel through Central Kalimantan to Balikpapan, East Kalimantan. Indonesia is a tropical country that is close to the equator, and Jakarta and Kalimantan provinces can be very hot and humid.

### THE 4 X 4 VEHICLES & CATEGORIES

Any make or model of vehicle is allowed. Modifications allowed as per rules and regulations. Vehicles must be registered for street use in the country of embarkation.

VAN BEMMELSTRAAT 48 - NL-3818 PD AMERSFOORT  
HOLLAND - NETHERLANDS - EUROPE

PHONE: +31 (0)6 53 24 49 61 - FAX: +31 (0)33 461 2509

E-MAIL: FRED . M . KRIJGSMAN @ XTREME - ADVENTURE . COM

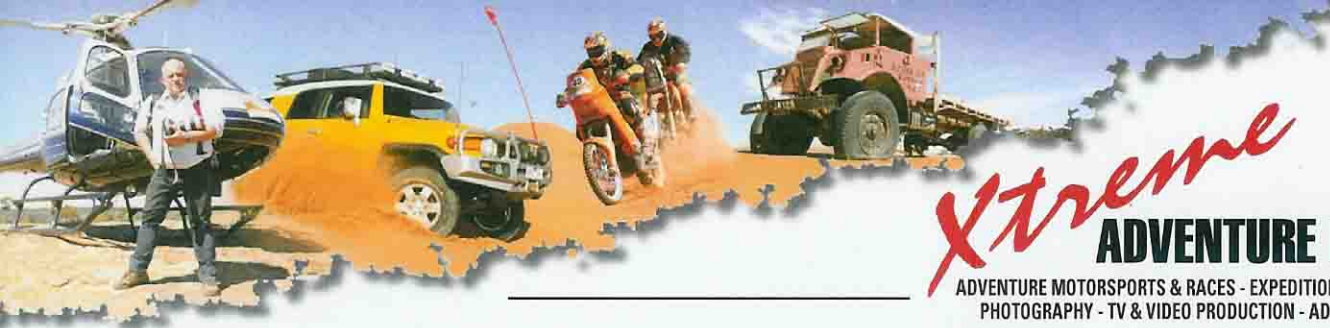
WWW.XTREME-ADVENTURE.COM

MEMBER OF THE NETHERLANDS ASSOCIATION OF JOURNALISTS/PHOTOJOURNALISTS (NVJ/NVF)

BTW N° / VAT N°: NL 1111 64 606 B01 - CHAMBER OF COMMERCE: 32071332







# *Xtreme* ADVENTURE REPORTS

ADVENTURE MOTORSPORTS & RACES - EXPEDITIONS - OUTDOORSPOOTS  
PHOTOGRAPHY - TV & VIDEO PRODUCTION - ADVERTISING DESIGN

INFORMATION

## PRESENTATION

### THE TROPHY AND AWARD

Trophies 1<sup>st</sup>, 2<sup>nd</sup>, 3<sup>rd</sup>, 4<sup>th</sup> and 5<sup>th</sup>. Trophy Team Spirit Award, Jungleman Award, Environment Award, Best Women's Team, Most Unique 4x4, Most Unique Motorbike, Most Unique ATV/QUAD and Special Award.

### ENTITLEMENT

Overseas participants' accommodation, domestic transportation PROVIDED By EVENT ORGANIZER. Food and Fuel at **own expense**. All participants receive event shirts, T-shirts, caps and dinner at closing ceremony. **Overseas participants insurance at own expense.**

### DEPOSIT

For overseas participants, a US\$ 2,000.00 deposit is required to reserve a place. This deposit is nonrefundable. For local participants, full, nonrefundable payment is required. Please send 2 color passport-size photographs along with your entry form. Also please include details of your Off-Road or Adventure experience.

### DRIVING LICENSE

Overseas participants please arrive with an International Driving License issued in your home country.

### CARNET DE PASSAGE

Please contact event organizer secretariat for details.

### FLIGHT AND OCEAN FREIGHT TO INDONESIA

At own expense. Please contact event organizer secretariat for more details.

### CUSTOMS CLEARANCE

By event organizer; local charges for Jakarta Port Container Unloading and Loading at own expense.

### FIRST AID COURSE

All participants must take a beginner's First Aid Course in their home country.

### PROVISIONS

All participants and Journalists must bring own drinks and food for 15 days, jacket, raincoat, clothing, boots, tent, sleeping bag and **anti-malaria tablets**.

### RIGHTS OF ORGANIZER

The organizer reserves the right to amend, change or cancel the route and/or schedule when necessary. The organizer can also cancel the event upon prior notice.

### INDEMNITY

All participants will have to sign an indemnity, which is included in the application form, before embarking on the adventure. Participants will be barred from joining the event if they fail to do so.

The organizer, creator/founder, its sponsors, representatives, officials, marshals, support staff or anyone appointed to the event by organizer is exempted from any responsibility of any kind for any mishap, death, loss, injury or damage to property, vehicle and personal belongings of the participants.

### LANGUAGE

The national language of Indonesia is Bahasa Indonesia, which is similar to the Malaysian language. There are also hundreds of regional languages and dialects. However, most people in the two provinces speak Bahasa Indonesia, and some people can understand English.

VAN BEMMELSTRAAT 48 - NL-3818 PD AMERSFOORT

HOLLAND - NETHERLANDS - EUROPE

PHONE: +31 (0)6 53 24 49 61 - FAX: +31 (0)33 461 2509

E-MAIL: FRED . M . KRIJGSMAN @ XTREME - ADVENTURE . COM

WWW.XTREME-ADVENTURE.COM

MEMBER OF THE NETHERLANDS ASSOCIATION OF JOURNALISTS/PHOTOJOURNALISTS (NVJ/NVF)  
BTW N° / VAT N°: NL 1111 64 606 B01 - CHAMBER OF COMMERCE: 32071332







# *Xtreme* ADVENTURE REPORTS

ADVENTURE MOTORSPORTS & RACES - EXPEDITIONS - OUTDOORSports  
PHOTOGRAPHY - TV & VIDEO PRODUCTION - ADVERTISING DESIGN

INFORMATION

## PRESENTATION

### CURRENCY

The local currency is the rupiah (Rp), which has an approximate value of Rp 12.000 to the American dollar, Rp 8.500 to the Australian dollar and Rp 15.000 to the Euro.

### FUEL :

Petrol Premium Rp 6.000 / litre (US\$ 0.55). Diesel Rp 5.500 / litre (US\$ 0.50)

### SCRUTINEERING :

December 04-05, 2009. From 10 am to 6 pm at Official Hotel, Pontianak.

### BRIEFING :

December 05, 2009. At 7 pm, at Official Hotel, Pontianak. **All Drivers and Co-drivers must be present.**

### GRAND OPENING :

December 06, 2009. At 9 am, at Official Hotel, Pontianak.

### CLOSING CEREMONY :

December 20, 2009. At 7 pm at Official Hotel, Balikpapan, East Kalimantan. Dinner and Local traditional dance performance at closing ceremony and award presentation.

### PAYMENT TO :

Bank : BCA KCP Gading Bukit Indah  
Address : Ruko Gading Bukit Indah.  
Jl. Gading Bukit Raya. Blok D. No.1, Jakarta 14240, Indonesia.  
Account : PT. CHEETAH LINTAS ALAM  
Acc Number : 7 4 8 0 0 0 7 9 4

### REGISTRATION ADDRESS :

**PT. CHEETAH LINTAS ALAM**

**Jl. Kelapa Gading Kirana. Blok H13, No.30-31.**

**Jakarta 14240 . Indonesia**

**Phone : (62 21) 45854318. Rosa : 021 32600306. Sandy : 08161917266**

**Fax : (62 21) 4513376**

**Email : justinus@centrin.net.id**

### OUR REPRESENTATIVE: EUROPE & AUSTRALIA

**Xtreme-Adventure**

**Van Bommelstraat 48 . NL-3818 PD Amersfoort.**

**Holland – Netherlands - Europe**

**Attention: Fred M. Krijgsman**

**Email : fred.m.krijgsman@xtreme-adventure.com**

**Website : www.xtreme-adventure.com**

**Mobile : +31 (0) 6-5324 4961. Phone/Fax +31 (0) 33-461 2509**

**Language spoken : Dutch, English & German**

**VAN BEMMELSTRAAT 48 - NL-3818 PD AMERSFOORT**

**HOLLAND - NETHERLANDS - EUROPE**

**PHONE: +31 (0)6 53 24 49 61 - FAX: +31 (0)33 461 2509**

**E-MAIL: FRED . M . KRIJGSMAN @ XTREME - ADVENTURE . COM**

**WWW. XTREME - ADVENTURE . COM**

MEMBER OF THE NETHERLANDS ASSOCIATION OF JOURNALISTS/PHOTOJOURNALISTS (NVJ/NVF)  
BTW N° / VAT N°: NL 1111 64 606 B01 - CHAMBER OF COMMERCE: 32071332





INFORMATION

PRESENTATION

**ENTITLEMENTS:**

**Overseas Participants :** Food and drink at own expense. **Insurance at own expense in country of origin.**

**ACCOMODATION :**

Provided by event organizer (overseas participants only)

**DOMESTIC TICKET :**

Provided by event organizer (overseas participants only)

**VISAS :**

Visa on arrival is available for citizens of: Argentina, Australia, Austria, Belgium, Brazil, Canada, Denmark, Egypt, Finland, France, Germany, Greece, Hungary, Ireland, Italy, Japan, Kuwait, Luxembourg, New Zealand, Norway, Poland, Portugal, Qatar, Russia, Saudi Arabia, South Korea, South Africa, Spain, Switzerland, Taiwan, UK, United Arab Emirates, United States, Visa on arrival is available at Jakarta's Soekarno-Hatta International Airport, Polonia Airport in Medan, North Sumatra, I Gusti Ngurah Rai Airport in Denpasar, Bali, and Juanda Airport in Surabaya, East Java. It is also available at Tanjung Priok Port in Jakarta, Tanjung Perak Port in Surabaya and Benoa Port in Bali. Citizens of countries eligible for visa on arrival pay US\$25 for a 30-days visa or \$10 for a 7 days visa. It is advisable to have the exact amount. Citizens of ASEAN countries are eligible for visa free entry into Indonesia

**FURTHER DETAILS**

Contact us on email: [justinus@centrin.net.id](mailto:justinus@centrin.net.id)

**HOTEL LIST :**

Pontianak Hotel.

**DUSIT BALIKPAPAN HOTEL.**

Jl. Jend. Sudirman. Balikpapan 76114. East Kalimantan. Indonesia.

Tel: (62-542) 420155. Fax: (62-542) 420150

**EVENT SCHEDULE**

<b>2010</b>	<b>December</b>	<b>Sumatera</b>
<b>2011</b>	<b>December</b>	<b>Java</b>
<b>2012</b>	<b>December</b>	<b>Sulawesi ( Celebes )</b>

**MESSAGE FROM FOUNDERS**

**ALL ARE WELCOME TO COME AND JOIN US IN THEIR 4-WHEEL  
DRIVE VEHICLES FOR THE CHANCE OF A LIFETIME TO SEE ALL THAT OUR ARCHIPELAGO HAS TO OFFER**

VAN BEMMELSTRAAT 48 - NL-3818 PD AMERSFOORT

HOLLAND - NETHERLANDS - EUROPE

PHONE: +31 (0)6 53 24 49 61 - FAX: +31 (0)33 461 2509

E-MAIL: FRED . M . KRIJGSMAN @ XTREME - ADVENTURE . COM

WWW. XTREME - ADVENTURE . COM

MEMBER OF THE NETHERLANDS ASSOCIATION OF JOURNALISTS/PHOTOJOURNALISTS (NVJ/NVF)  
BTW N° / VAT N°: NL 1111 64 606 B01 - CHAMBER OF COMMERCE: 32071332







# *Xtreme* ADVENTURE REPORTS

ADVENTURE MOTORSPORTS & RACES - EXPEDITIONS - OUTDOORSPOOTS  
PHOTOGRAPHY - TV & VIDEO PRODUCTION - ADVERTISING DESIGN

INFORMATION

PRESENTATION



## BORNEO EQUATOR EXPEDITION 2009 WEST BORNEO – CENTRAL BORNEO – EAST BORNEO DECEMBER 6<sup>th</sup> till DECEMBER 20<sup>th</sup> 2009

### REGISTRATION :

Open : August 01, 2009  
Close : November 01, 2009

### TEAM ENTRY :

**Maximum Overseas Participants : 20 Vehicles, 10 Motorcycles and 2 ATV's**

### OVERSEAS PARTICIPANTS ENTRANCE FEE :

**US\$ 4,000.00 (1 Vehicle + 2 person)**  
**US\$ 2,000.00 for each extra passenger.**  
**US\$ 2,500.00 (1 QUAD/ATV + 1 person)**  
**US\$ 2,000.00 (1 Motorcycle + 1 person)**

### The event organizer will provide:

- Tanjung Priok Port handling for Import and Export the Vehicle.
- Shipping Vehicle from Jakarta to Pontianak, West Borneo and from Balikpapan, East Borneo to Jakarta.
  - Domestic return tickets for 2 persons from Jakarta to Pontianak and from Balikpapan to Jakarta.
- Accommodation 1 room for 2 persons: Jakarta, 2 nights before event and 1 night after event. Pontianak, 3 nights before event. Balikpapan, 2 nights after event.
  - Transportation to the airport and Airport Tax.

### At your own expense:

- Shipping the vehicle from original country to Tanjung Priok Port, Indonesia.
  - Return ticket from original country.
  - Insurance at your home country.
  - 400 lt Fuel. Petrol US\$ 0.55/lt. Diesel US\$ 0.50/lt
- Food before event, event date and after event, 21 days.

VAN BEMMELSTRAAT 48 - NL-3818 PD AMERSFOORT  
HOLLAND - NETHERLANDS - EUROPE

PHONE: +31 (0)6 53 24 49 61 - FAX: +31 (0)33 461 2509

E-MAIL: FRED . M . KRIJGSMAN @ XTREME - ADVENTURE . COM

WWW.XTREME-ADVENTURE.COM

MEMBER OF THE NETHERLANDS ASSOCIATION OF JOURNALISTS/PHOTOJOURNALISTS (NVJ/NVF)

BTW N° / VAT N°: NL 1111 64 605 B01 - CHAMBER OF COMMERCE: 32071332







# *Xtreme* ADVENTURE REPORTS

ADVENTURE MOTORSPORTS & RACES - EXPEDITIONS - OUTDOORSports  
PHOTOGRAPHY - TV & VIDEO PRODUCTION - ADVERTISING DESIGN

INFORMATION

## PRESENTATION

### SHIPPING SCHEDULE:

- **November 23, 2009** All vehicles must arrive at the Tanjung Priok Port, Jakarta – Indonesia.
- **November 28, 2009** All vehicles will ship from Jakarta to Pontianak, West Kalimantan arranged by event organizer.
- **December 03, 2009** Participants collect your own vehicle at Pontianak Port.
- **December 21, 2009** All vehicles sent from Balikpapan, East Kalimantan to Jakarta Port.
- **December 29, 2009** All vehicles must sent from Jakarta to home country. Please make a booking at your shipping agent.

Shipping Address

: **INDONESIAN OFFROAD FEDERATION (IOF)**

Shipping Document

: **Please make packing list details when you sent the vehicle.**

Shipping & Custom Clearance

: **Provide By event organizer.**

### OVERSEAS PARTICIPANTS: ARRIVAL & DEPART

- **December 01, 2009** Participants arrive at Jakarta. Check-in at Official Hotel, Jakarta.
- **December 03, 2009** Participants travel by air from Jakarta to Pontianak, West Kalimantan as arranged by event organizer. Travel time is about 1.5 hours. Check-in at Official Hotel, Pontianak. Participants collect the vehicle at Pontianak Port.
- **December 21, 2009** All participants vehicles send from Balik Papan Port, East Kalimantan for shipment to Jakarta Port.
- **December 22, 2009** Participants travel by air from Balik Papan, East Kalimantan To Jakarta. Check-in at the Jakarta Hotel.
- **December 23, 2009** Participants return to home country. Please make a booking for your flight.
- **December 29, 2009** All overseas participants vehicles send to home country arranged by event organizer. Collecting vehicles, Domestic Traveling and Accommodation will be arranged by event organizer.

VAN BEMMELSTRAAT 48 - NL-3818 PD AMERSFOORT

HOLLAND - NETHERLANDS - EUROPE

PHONE: +31 (0)6 53 24 49 61 - FAX: +31 (0)33 461 2509

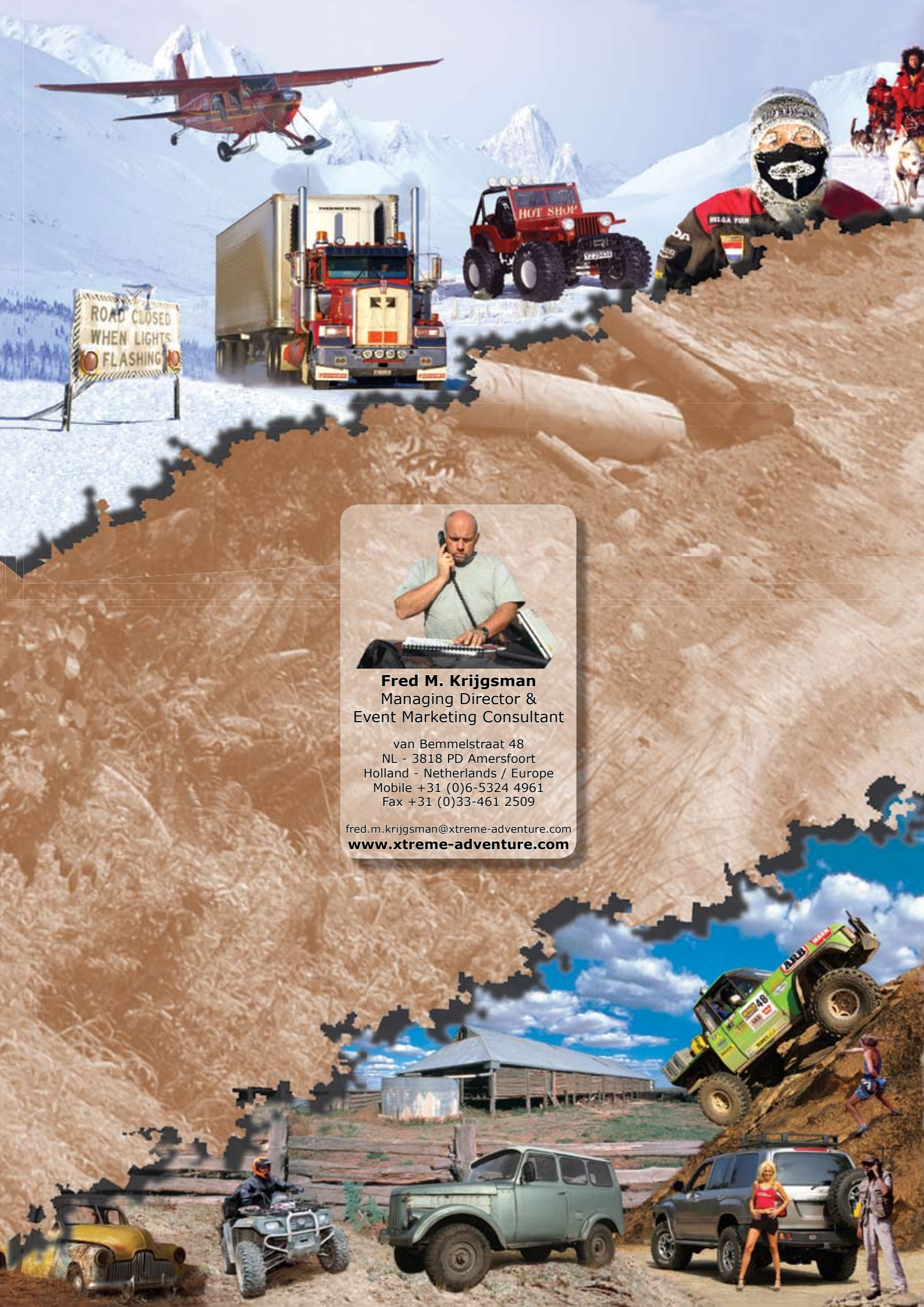
E-MAIL: FRED . M . KRIJGSMAN @ XTREME - ADVENTURE . COM

WWW.XTREME-ADVENTURE.COM

MEMBER OF THE NETHERLANDS ASSOCIATION OF JOURNALISTS/PHOTOJOURNALISTS (NJJ/NVF)  
BTW N° / VAT N°: NL 1111 64 606 801 - CHAMBER OF COMMERCE: 32071332







**Fred M. Krijgsman**  
Managing Director &  
Event Marketing Consultant

van Bommelstraat 48  
NL - 3818 PD Amersfoort  
Holland - Netherlands / Europe  
Mobile +31 (0)6-5324 4961  
Fax +31 (0)33-461 2509

[fred.m.krijgsman@xtreme-adventure.com](mailto:fred.m.krijgsman@xtreme-adventure.com)  
[www.xtreme-adventure.com](http://www.xtreme-adventure.com)