

Get into the World of General Tire

# Show what your off-road vehicle can really do.

Grabber New Generation

## GRABBER AT<sup>2</sup>



The Grabber AT<sup>2</sup> is a technological masterpiece. Tortured by American off-road specialists under the toughest conditions, the Grabber AT<sup>2</sup> is the result of years of developments on the most varied grounds. Smooth on asphalt, rough on loose grounds - the perfect mix.

### Vehicle Examples

BMW	MERCEDES
JEEP	MITSUBISHI
LANDROVER	TOYOTA



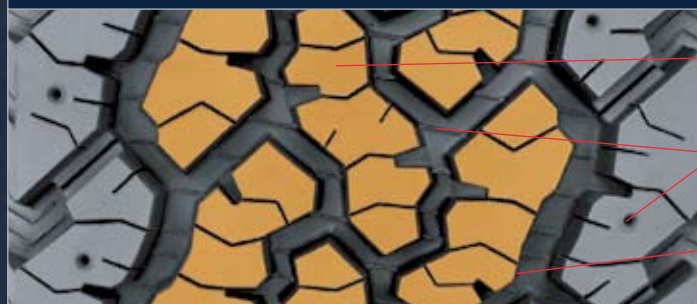
**GENERALTIRE** 



# GRABBER AT<sup>2</sup> –

## The specialist for difficult terrain

With its new tread pattern and further improved rubber compound, the Grabber AT<sup>2</sup> provides an excellent grip in all weathers. The extensive high-torsion tread lugs ensure excellent propulsion both on stony and muddy ground.



### OPTIMISED 5 ROW TREAD PATTERN

(Aggressive, Gripping, Biting, Self-Cleaning)

PINNED FOR STUDS

TRACTION RIDGES

(All-Terrain Traction)

ADVANCED CUT & CHIP

RESISTANT TREAD COMPOUND

(Outstanding Traction + Handling)

### Features

- 1 Optimised 5-Row Tread Pattern
- 2 Advanced Cut & Chip Resistant Tread Compound
- 3 Square Tread Contour
- 4 Traction Ridges
- 5 Rim Protector Flange
- 6 All Season Pattern Design

### Benefits

- 1 Five rows of aggressive, gripping, biting, self-cleaning tread lugs for commanding performance on and off the road.
- 2 1,35 cm of the meanest, cut & chip resistant tread compound that enjoys running over rough terrain.
- 3 Nothing square about this tire except the tread contour, when shape does matter for commanding surface contact.
- 4 When the trail gets sloppy, traction ridges at the base of every groove give added traction to pull you through.
- 5 When the trail gets tough, the built in rim protector shields your cherished rims from damage and repels debris from the bead to get you back home.
- 6 Even in the winter this tyre won't let you down.

PATTERN	RIM DIA-METER	SIZE	SPEED/LOAD INDEX	LOAD RANGE	SIDE-WALL	RIM PROTECTION	PERMITTED RIMS WIDTH		TYRE DIMENSIONS		TREAD PATTERN DEPTH (MM)	ROLLING CIRCUM-FERENCE (MM)
							MIN.	MAX.	MAX. IN SERVICE (MM)	ON MEASURING RIM WIDTH (MM)		
AT <sup>2</sup>	15"	LT30x9.50 R 15	104 S		OWL	FR	6.5	8.5	765	251	13.5	2285
		LT31x10.50 R 15	109 S		OWL	FR	7.0	9.0	791	278	13.5	2365
		LT33x12.50 R 15	108 S		OWL	FR	8.5	11.0	844	343	13.5	2519
		LT35x12.50 R 15	113 Q		BSW	FR	8.5	11.0	897	343	13.5	2675
		205/75 R 15	97 T		OWL		5.5	7.0	701	211	11.1	2101
		215/75 R 15	100 S		OWL		5.5	7.0	715	225	11.1	2144
		225/75 R 15	102 S		OWL		6.0	7.5	733	232	13.5	2193
		235/75 R 15	109 S		OWL		6.0	8.0	747	244	10.0	2236
		225/70 R 15	100 S		OWL	FR	6.0	7.5	709	237	13.5	2125
		255/70 R 15	108 S		OWL	FR	6.5	8.5	753	270	13.5	2254
		265/70 R 15	112 S		OWL	FR	7.0	9.0	767	282	13.5	2297
				XL								
	16"	LT235/85 R 16	120/116 S		OWL	FR	6.0	7.5	822	249	13.1	2458
		225/75 R 16	108 S		OWL	FR	6.0	7.5	758	232	13.5	2269
		LT245/75 R 16	120/116 S		OWL	FR	6.5	7.5	788	263	13.1	2361
		LT265/75 R 16	123/120 Q		OWL	FR	7.0	8.0	820	283	13.1	2450
		LT285/75 R 16	122/119 Q		OWL	FR	7.5	9.0	852	303	13.5	2544
		LT295/75 R 16	123/120 Q		OWL	FR	7.5	9.5	866	312	13.5	2586
		LT315/75 R 16	121 Q		OWL	FR	8.0	10.0	896	332	13.5	2678
		215/70 R 16	100 T		BSW	FR	5.0	7.0	720	230	11.5	2159
		235/70 R 16	106 T		OWL	FR	6.0	8.0	750	250	11.1	2245
		245/70 R 16	107 T		OWL	FR	6.5	8.0	764	258	13.5	2287
		255/70 R 16	111 S		OWL	FR	6.5	8.5	778	270	13.5	2330
		265/70 R 16	112 T		OWL	FR	7.0	9.0	792	283	13.5	2373
		LT305/70 R 16	118/115 Q		OWL	FR	8.0	9.5	852	330	13.5	2544
		215/65 R 16	98 T		BSW	FR	6.0	7.5	698	230	11.5	2090
		255/65 R 16	109 T		BSW	FR	7.0	9.0	752	270	13.5	2251
		LT245/70 R 17	110 S		OWL		6.5	8.0	764	258	13.1	2287
	17"	LT255/70 R 17	112 S		BSW		6.5	8.5	804	270	13.5	2410
		265/70 R 17	115 S		OWL	FR	7.5	9.5	818	283	13.1	2450
		LT265/70 R 17	121/118 Q		OWL		7.0	8.5	826	288	13.5	2471
		255/65 R 17	110 H		BSW		7.0	9.0	778	270	10.6	2330
		265/65 R 17	112 T		BSW	FR	7.5	9.5	950	283	13.1	2365
	18"	LT265/70 R 18	116 S		OWL		7.0	9.0	843	283	13.5	2528
		LT275/70 R 18	125/122 Q		OWL		7.0	9.0	865	296	13.5	2589
		LT275/65 R 18	116 S		BSW		7.5	9.5	829	296	13.5	2486
		LT275/65 R 18	123/120 Q		OWL		7.5	9.0	835	296	13.5	2504
		255/60 R 18	112 H		BSW	FR	7.0	9.0	755	270	10.6	2265
		LT285/60 R 18	122/119 Q		BSW		8.0	10.0	819	310	13.5	2455
		255/55 R 18	109 H		BSW	FR	7.0	9.0	749	276	10.6	2248
	20"	305/50 R 20	120 T		BSW	FR	8.5	11.0	826	329	13.1	2485