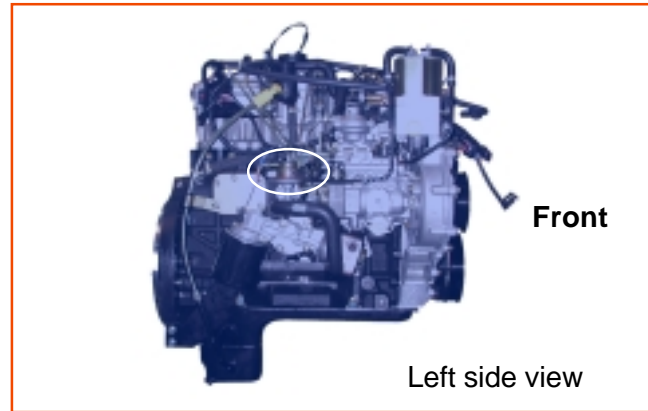


► **TECHNICAL FEATURES**

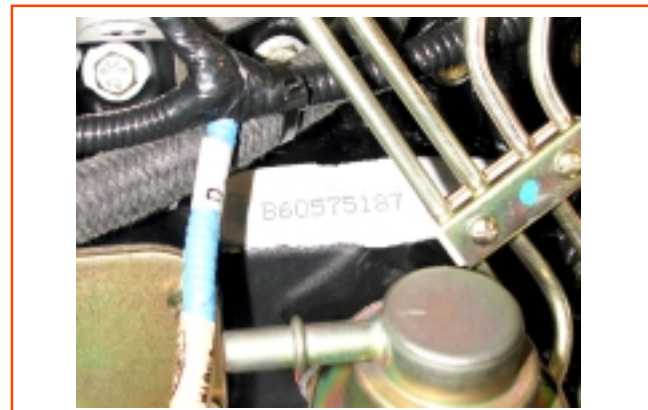
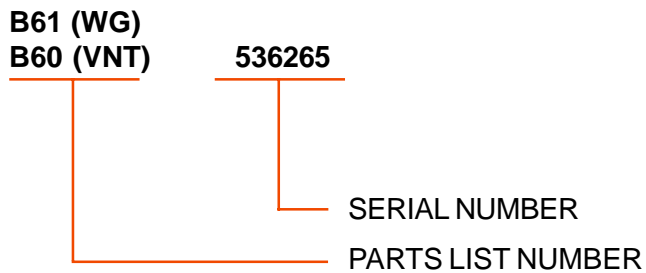
ENGINE TYPE	INTERNATIONAL HS 2.8L	
PL number	8B60	8B61
Turbocharger	Variable Nozzle (VNT)	With Wastegate
Number and Cylinder Arrangement	4 in line	
Cylinder Nominal Bore	93.0 mm	
Stroke	102.50 mm	
Cycle	Diesel, 4 stroke	
Compression Relation	19.5 : 1	
Total Displacement	2,8 Liters	
Combustion System	Direct Injection	
Rotation Sense (front view)	Clockwise	
Firing Order	1 - 3 - 4 - 2	
Opening Beginning	86 - 90 °C	
Operation Temperature	86 -102 °C	
Lubricant oil Pressure (at Maximum Specified Speed With the Engine at Normal Operation Temperature)	3.5 bar	
Maximum Speed Unload	4640 rpm	
Idle Speed	800 rpm ± 20	
Static Injection Beginning at TDC	0°	
Engine Cooling	Liquid	
Power (NBR5454)	135 hp (99 kW) at 3800 rpm	133 hp (97 kW) at 3800 rpm
Torque (NBR5454)	38.2 kgfm (375 Nm) at 1400 rpm	36.2 kgfm (355 Nm) at 1600 rpm
Weight (basic unit)	208 kg	205 kg

## LOCATION AND IDENTIFICATION OF THE ENGINE NUMBER

### Location



### Identification



- For engines manufactured in Brazil - nr 000001 to 499999.
- For engines manufactured in Argentina - nr from 500000 on.

**PS:** (WG) - Wastegate Version  
(VNT) - Variable Nozzle Turbocharger Version