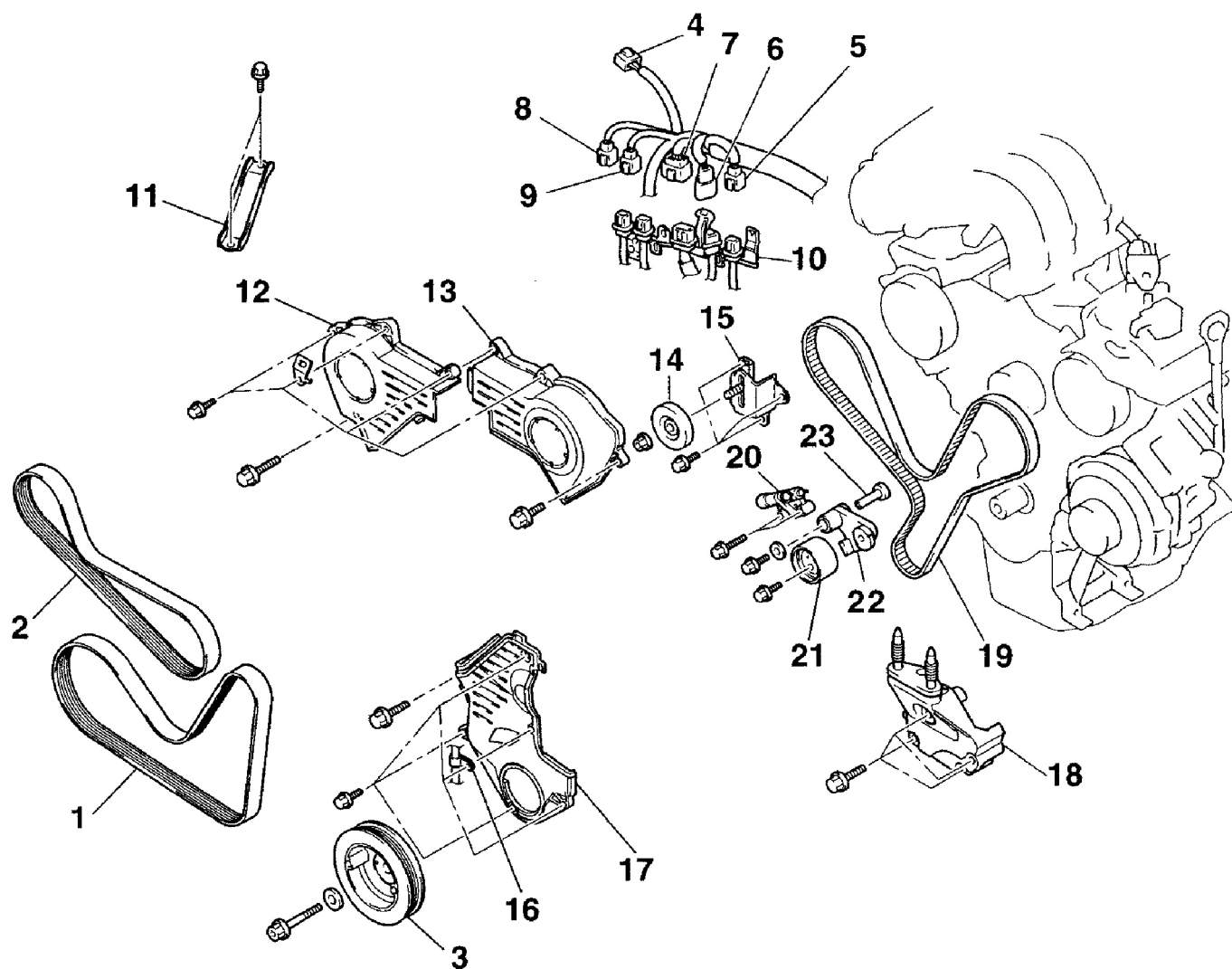


Removal

1. On Galant, remove engine cover. On all models, remove skid plate and under cover. Remove accessory drive belts. Using Pulley Holder (MB991800) and Pins "B" (MB001802), remove crankshaft pulley.
2. Disconnect harness connectors on connector bracket. See **Fig. 1** or **Fig. 2** . Remove connector bracket. Remove engine mount support bracket. Remove both upper timing belt covers.
3. Remove tensioner pulley and tensioner bracket. Remove crankshaft position sensor harness clamp. Remove lower timing belt cover. Remove front engine mount and front engine mount bracket.

CAUTION: Always turn crankshaft in clockwise direction (as viewed from front of engine).

4. Turn crankshaft clockwise to align camshaft and crankshaft timing marks. See **Fig. 3** . If timing belt is to be reused, place arrow on belt to indicate direction of belt rotation.
5. Loosen belt tensioner pulley center bolt. Remove timing belt. Remove timing belt auto-tensioner.

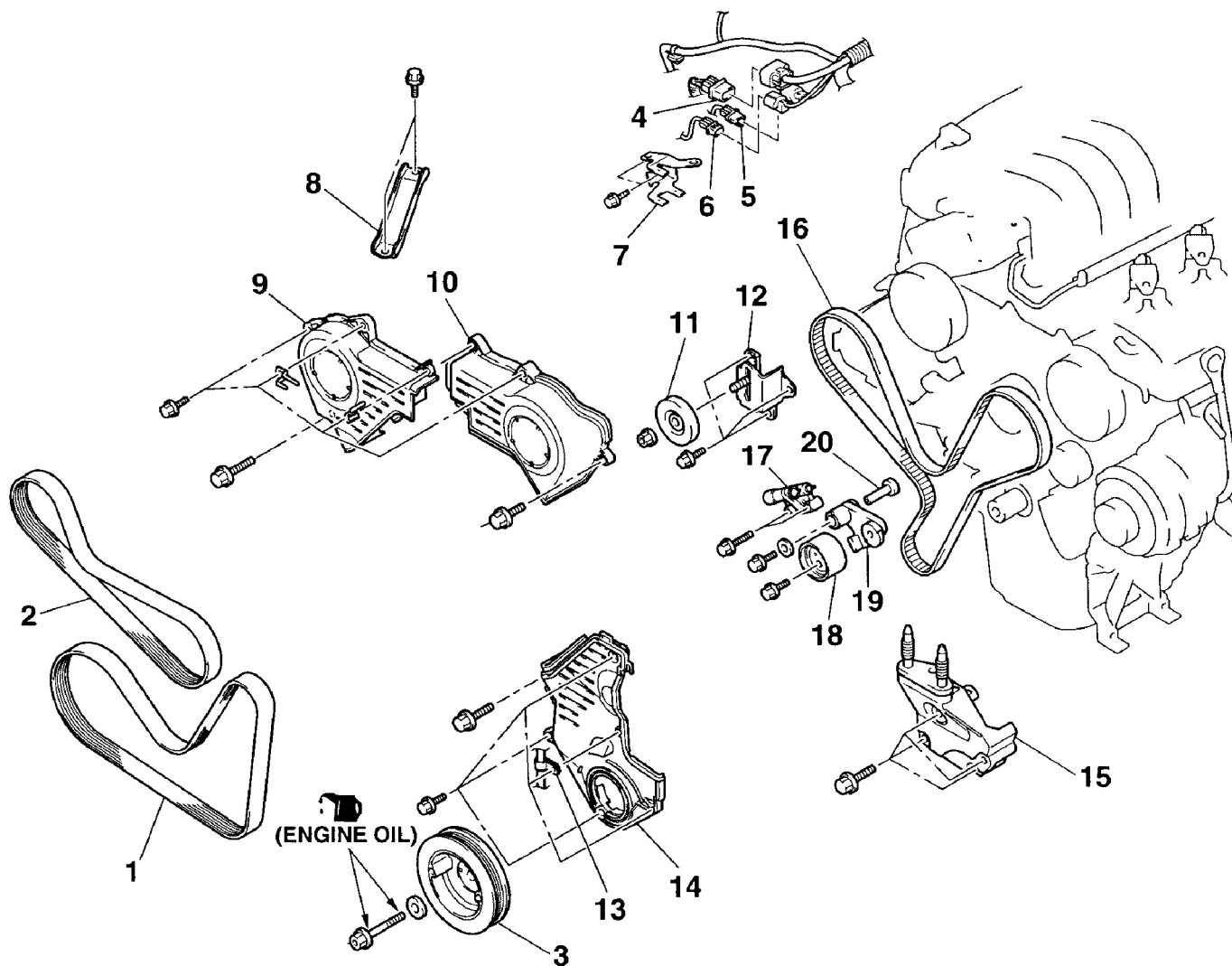


- 1. GENERATOR DRIVE BELT
- 2. POWER STEERING OIL PUMP DRIVE BELT
- 3. CRANKSHAFT PULLEY
- 4. MANIFOLD DIFFERENTIAL PRESSURE SENSOR CONNECTOR
- 5. KNOCK SENSOR CONNECTOR
- 6. CRANKSHAFT POSITION SENSOR CONNECTOR
- 7. CONTROL WIRING HARNESS AND INJECTOR WIRING HARNESS COMBINATION CONNECTOR

- 8. RIGHT BANK HEATED OXYGEN SENSOR (REAR) CONNECTOR
- 9. RIGHT BANK HEATED OXYGEN SENSOR (FRONT) CONNECTOR
- 10. CONNECTOR BRACKET
- 11. ENGINE MOUNT STAY
- 12. TIMING BELT FRONT UPPER COVER, RIGHT
- 13. TIMING BELT FRONT UPPER COVER, LEFT
- 14. TENSIONER PULLEY
- 15. TENSIONER BRACKET
- 16. CRANKSHAFT POSITION SENSOR HARNESS CLAMP
- 17. TIMING BELT LOWER COVER

G00293404

Fig. 1: Exploded View Of Timing Belt Components (Endeavor)
 Courtesy of MITSUBISHI MOTOR SALES OF AMERICA.



- | | |
|---|--|
| 1. GENERATOR DRIVE BELT | 7. CONNECTOR BRACKET |
| 2. POWER STEERING OIL PUMP DRIVE BELT | 8. ENGINE MOUNT STAY |
| 3. CRANKSHAFT PULLEY | 9. TIMING BELT FRONT UPPER COVER, RIGHT |
| 4. CONTROL WIRING HARNESS AND INJECTOR WIRING HARNESS COMBINATION | 10. TIMING BELT FRONT UPPER COVER, LEFT |
| 5. KNOCK SENSOR CONNECTOR | 11. TENSIONER PULLEY |
| 6. CRANKSHAFT POSITION SENSOR CONNECTOR | 12. TENSIONER BRACKET |
| | 13. CRANKSHAFT POSITION SENSOR HARNESS CLAMP |
| | 14. TIMING BELT LOWER COVER |

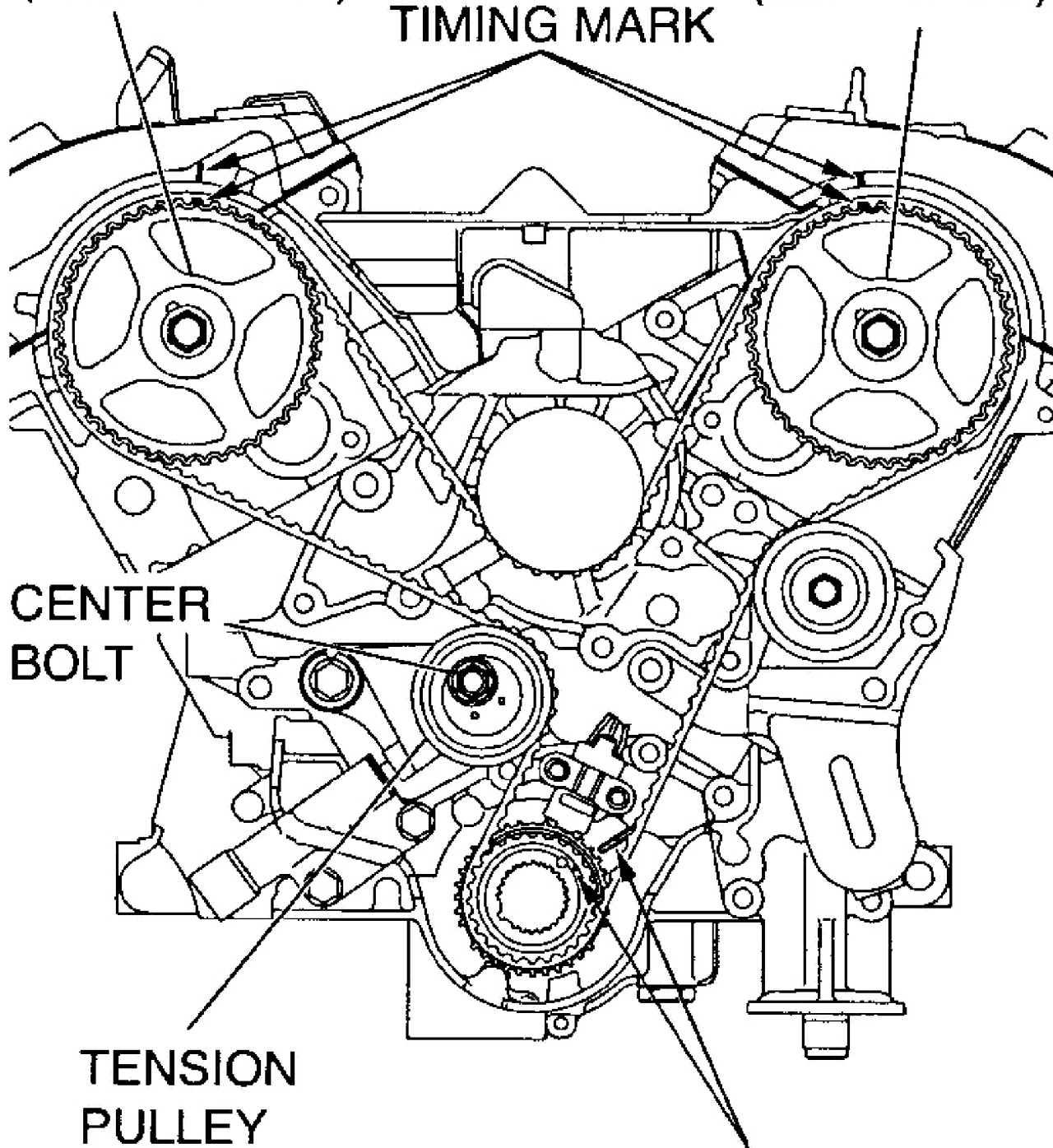
G00293405

Fig. 2: Exploded View Of Timing Belt Components (Galant)
 Courtesy of MITSUBISHI MOTOR SALES OF AMERICA.

CAMSHAFT
SPROCKET
(RIGHT BANK)

CAMSHAFT
SPROCKET
(LEFT BANK)

TIMING MARK



CENTER
BOLT

TENSION
PULLEY

TIMING MARK

Fig. 3: Aligning Timing Marks

Courtesy of MITSUBISHI MOTOR SALES OF AMERICA.