



Mercedes-Benz

# G Class Introduction



P00.00-3363-00

These technical training materials are current as of the date noted on the materials, and may be revised or updated without notice. Always check for revised or updated information.

To help avoid personal injury to you or others, and to avoid damage to the vehicle on which you are working, you must always refer to the latest Mercedes-Benz Technical Publication and follow all pertinent instructions when testing, diagnosing or making repair.

Illustrations and descriptions in this training reference are based on preliminary information and may not correspond to the final US version vehicles. Refer to the official introduction manual and WIS when available.

*Copyright Mercedes-Benz USA, LLC, 2003*

*Reproduction by any means or by any information storage and retrieval system or translation in whole or part is not permitted without written authorization from Mercedes-Benz USA, LLC or its successors.*

*Published by Mercedes-Benz USA, LLC*

*Printed in U. S.A.*

# USA Models

## **G500** **463.249**

## **G55 AMG** **463.246**

- |                    |                    |           |
|--------------------|--------------------|-----------|
| • Engine:          | 5.0 V8             | 5.5 V8    |
| • Horse power:     | 292 hp             | 349 hp    |
| • Torque:          | 336 lb-ft          | 387 lb-ft |
| • 0-60 mph         | 10.2s              | 7.2s      |
| • Overall width:   | 71.3 in.           | 73.4 in.  |
| • Curb weight:     | 5423 lbs.          | 5540 lbs. |
| • Payload:         | 1411 lbs.          |           |
| • Towing capacity: | 7000 lbs. (braked) |           |

# US Vehicle Identification Number

**WDC**... . first 3 digits = World manufacturer identifier (DaimlerChrysler AG)

**Y**.....fourth digit = Chassis designation (Y= 463 )

**R**.....fifth digit = Motor type (R= gas)

**49**.....sixth & seventh digit = Body style (49= G500 46= G55)

**E** .....eighth digit = Gross vehicle weight (E= 6001-7000 lbs.)

**5**.....ninth digit = Test number (factory use)

**2**.....tenth digit = Model year (2= 2002, 3= 2003)

**X**.....eleventh digit = Manufacturing plant (X= Graz, Austria)

**126776**....Production number (serial number)



# US Vehicle Identification Number

Label B Pillar, Drivers Side



Production date

Paint code

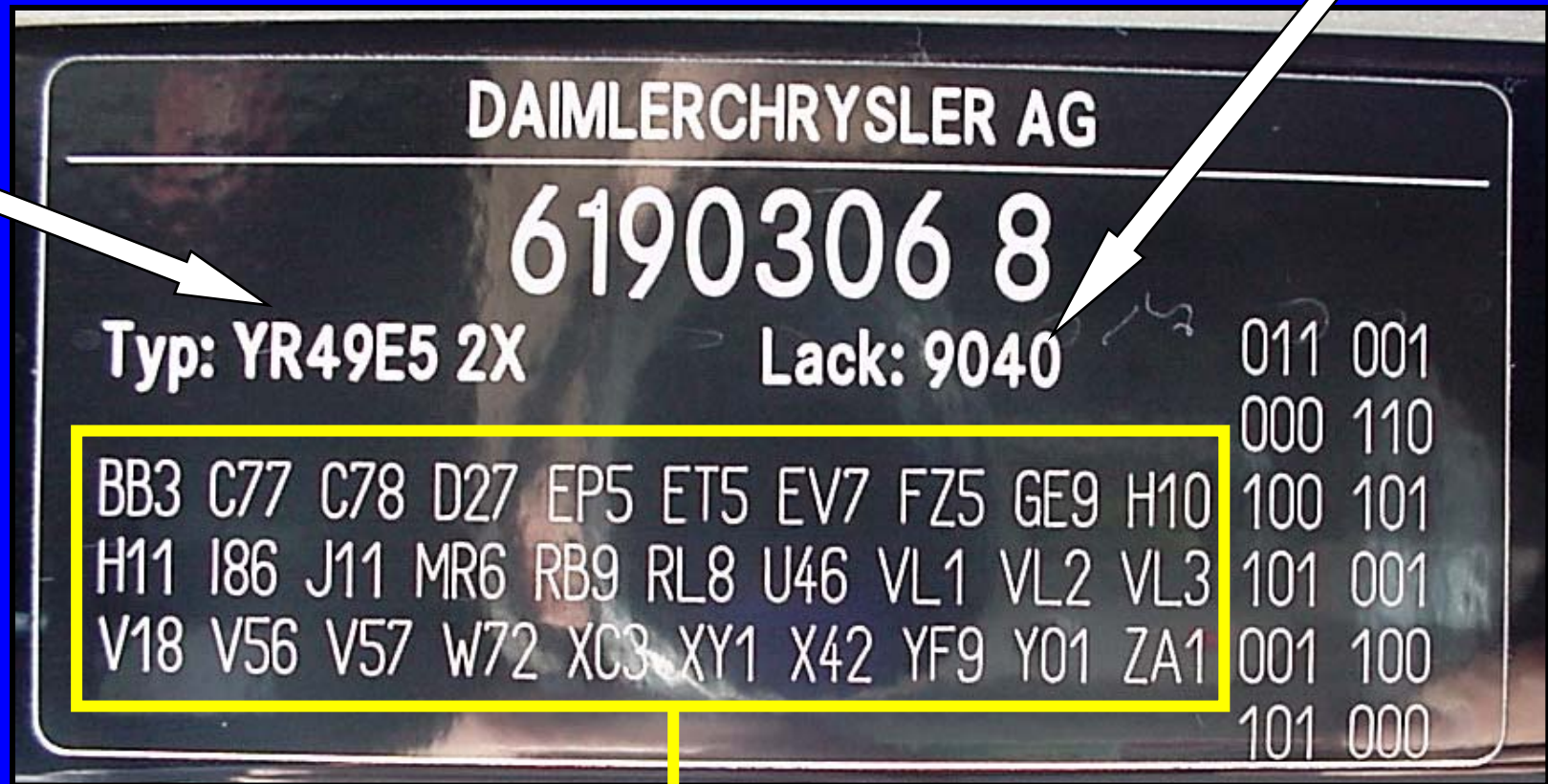
VIN

# US Vehicle Identification Number

Label B Pillar, Passenger Side

Paint code

Vehicle Type

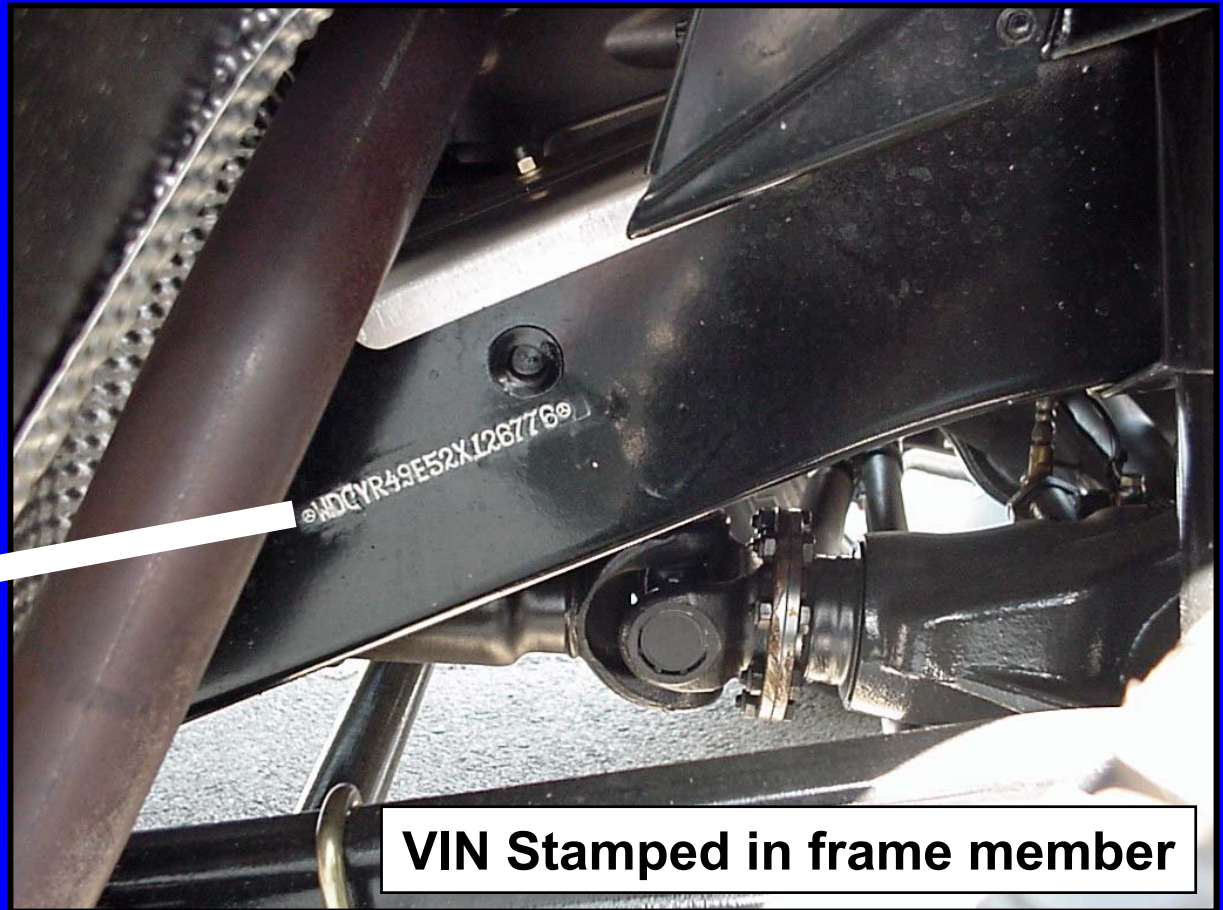
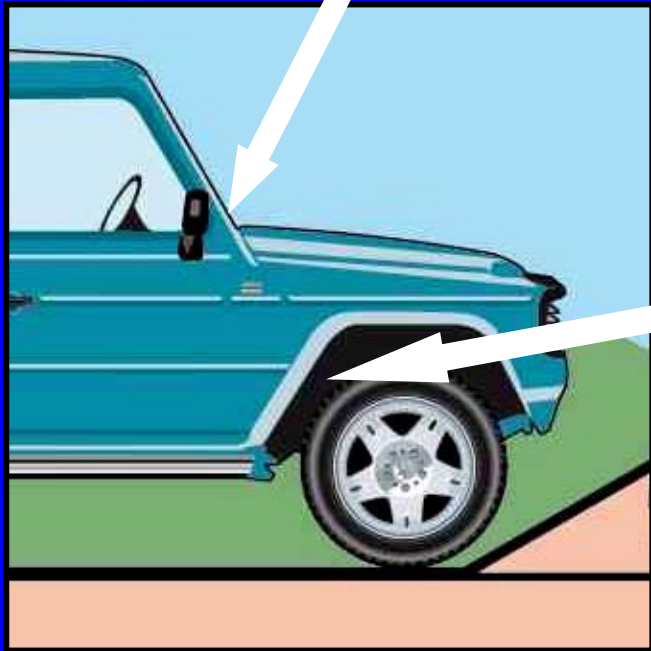


Factory Option / Equipment codes - (e.g. V18 = Black interior)



# US Vehicle Identification Number

VIN plate is attached to instrument panel. If instrument panel is replaced ensure that VIN plate is transferred.



**VIN Stamped in frame member**

# True Off-road Capabilities

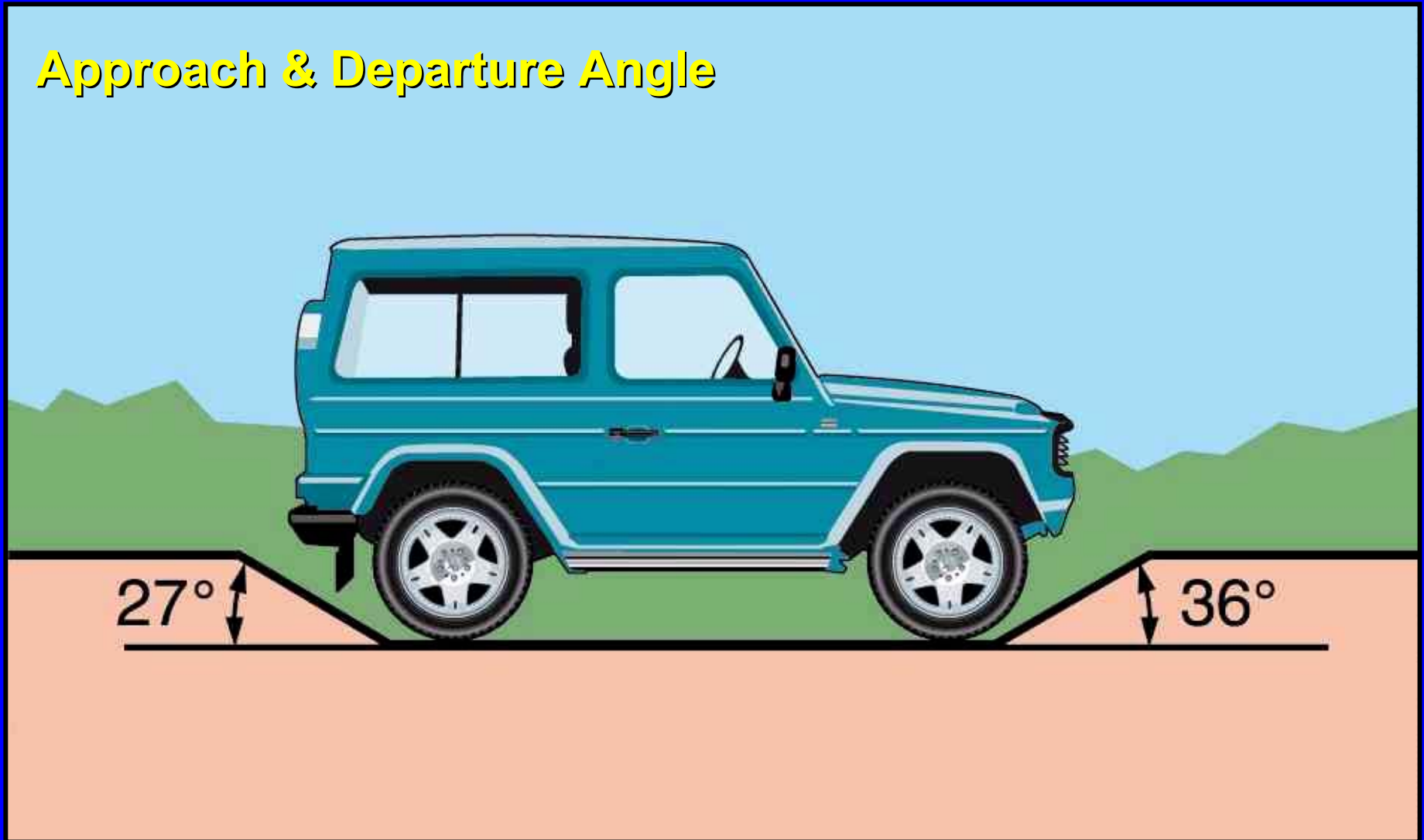
- Permanent all-wheel drive
- 4-ETS
- 3 differential locks
  - center, rear and front
- 2 speed transfer case
  - high, low, neutral
- Rigid front and rear axles
- Body on frame
- Ladder style frame
  - 2 fully boxed longitudinal members
  - 6 tubular transverse frame cross members
  - hand welded & corrosion protected





# True Off-road Capabilities

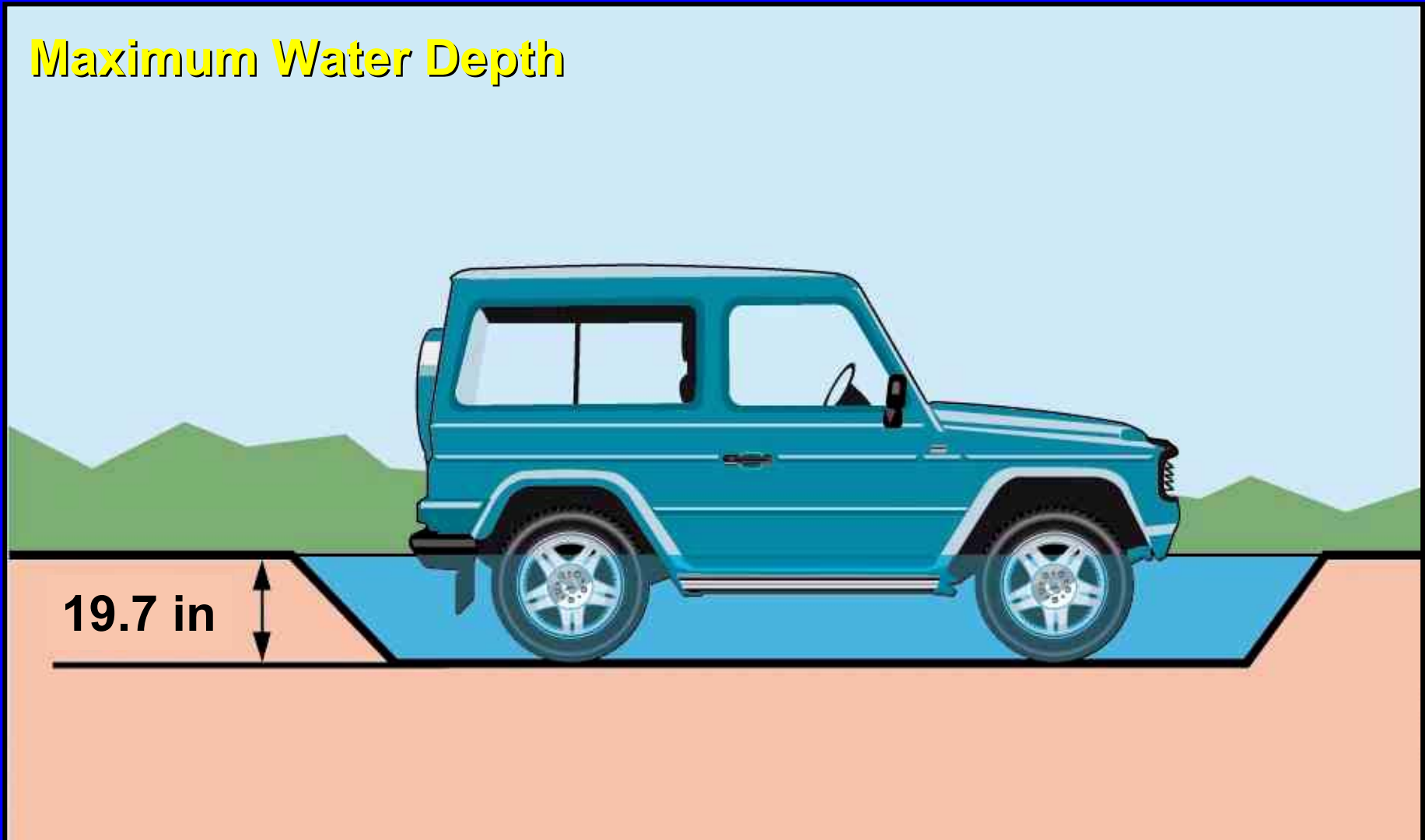
## Approach & Departure Angle



*For comparison 2002 ML Front 26° / Rear 25°*

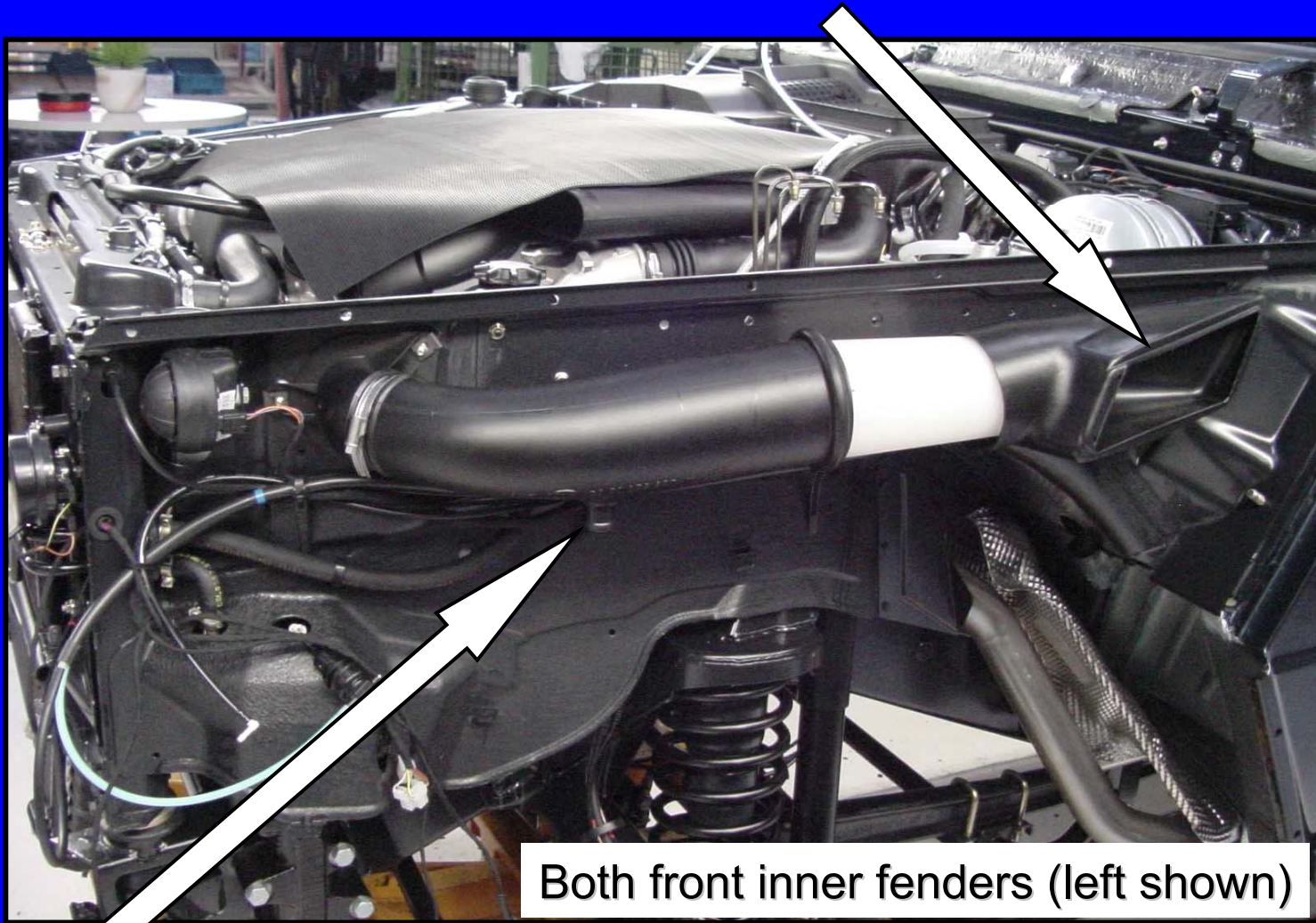
# True Off-road Capabilities

## Maximum Water Depth



*For comparison 2002 ML 19.1 in.*

# Engine Air Intake



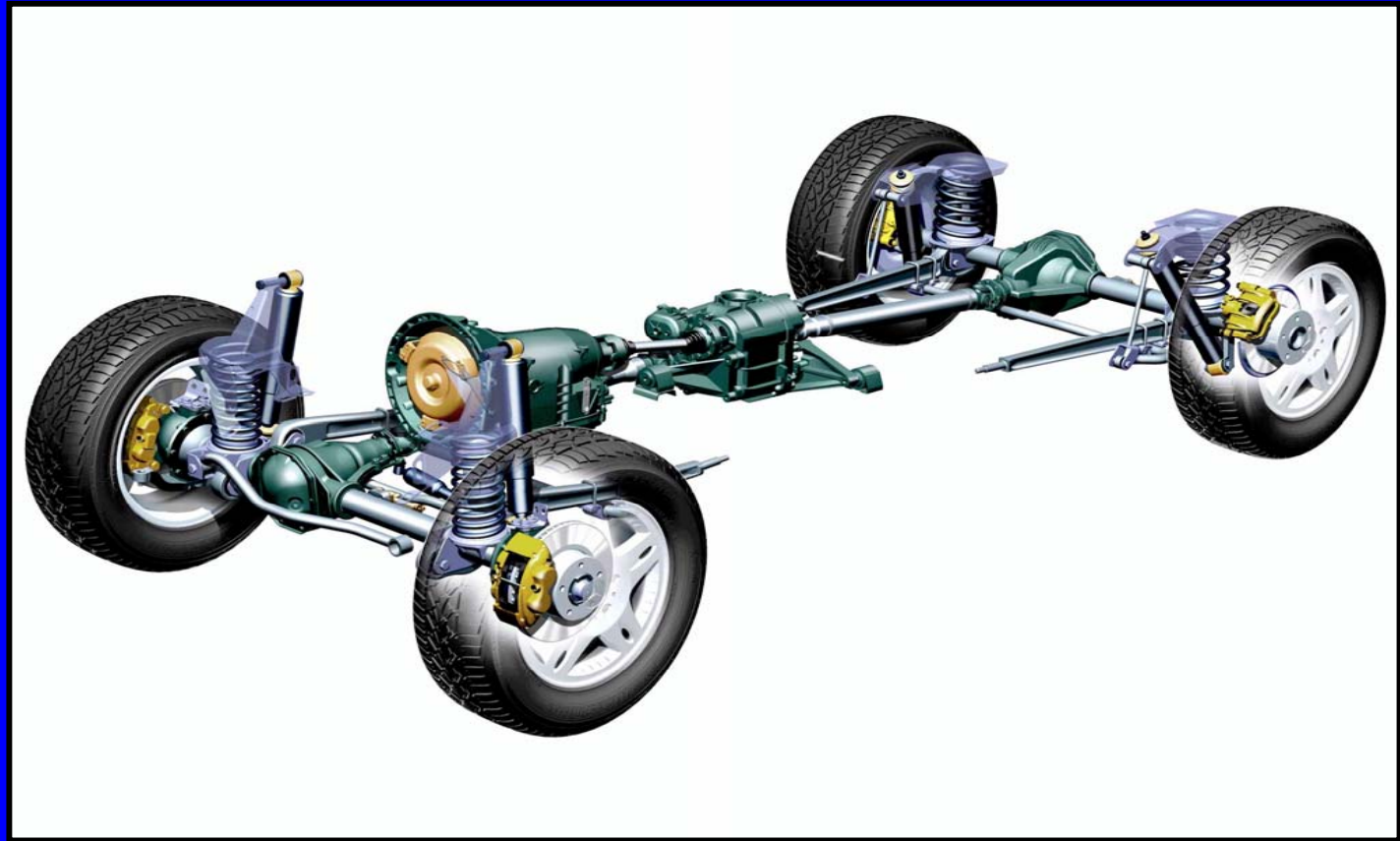
Water drain

Both front inner fenders (left shown)



# Driveline

- Rigid axles
- Coil springs
- Front and rear stabilizer bar
- Gas filled shock absorbers
- 3 propeller shafts
- 3 differential locks
- 4 wheel disc brakes
- ABS, EBP, BAS, 4-ETS, ESP



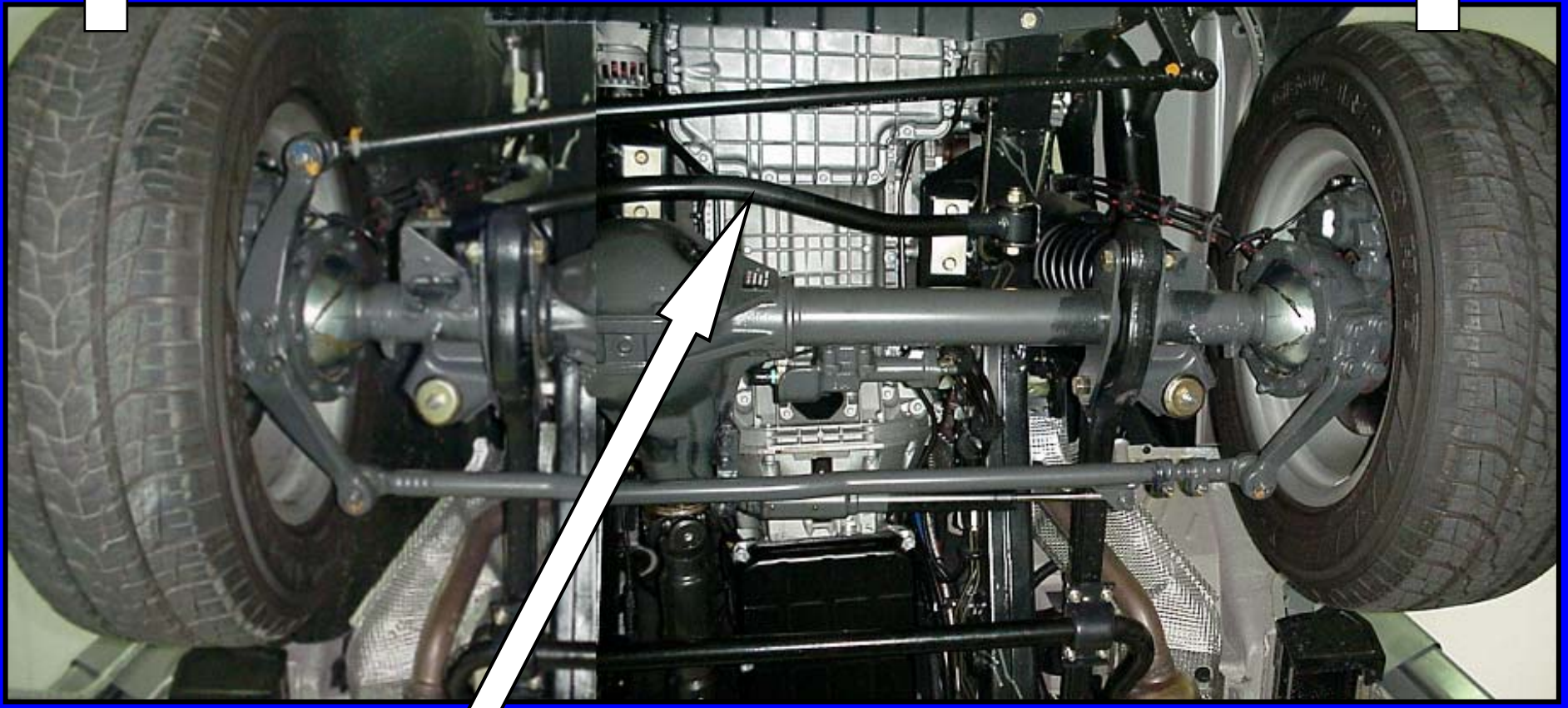
Wheels have a larger bolt pattern, so will not fit other MB vehicles.

# Steering

- Recirculating ball steering
- Power assisted (not speed dependant)
- Engine mounted higher on left side for component clearance
- Electrically adjustable steering wheel (with memory)
- Heated steering wheel (2003 option)



# Steering



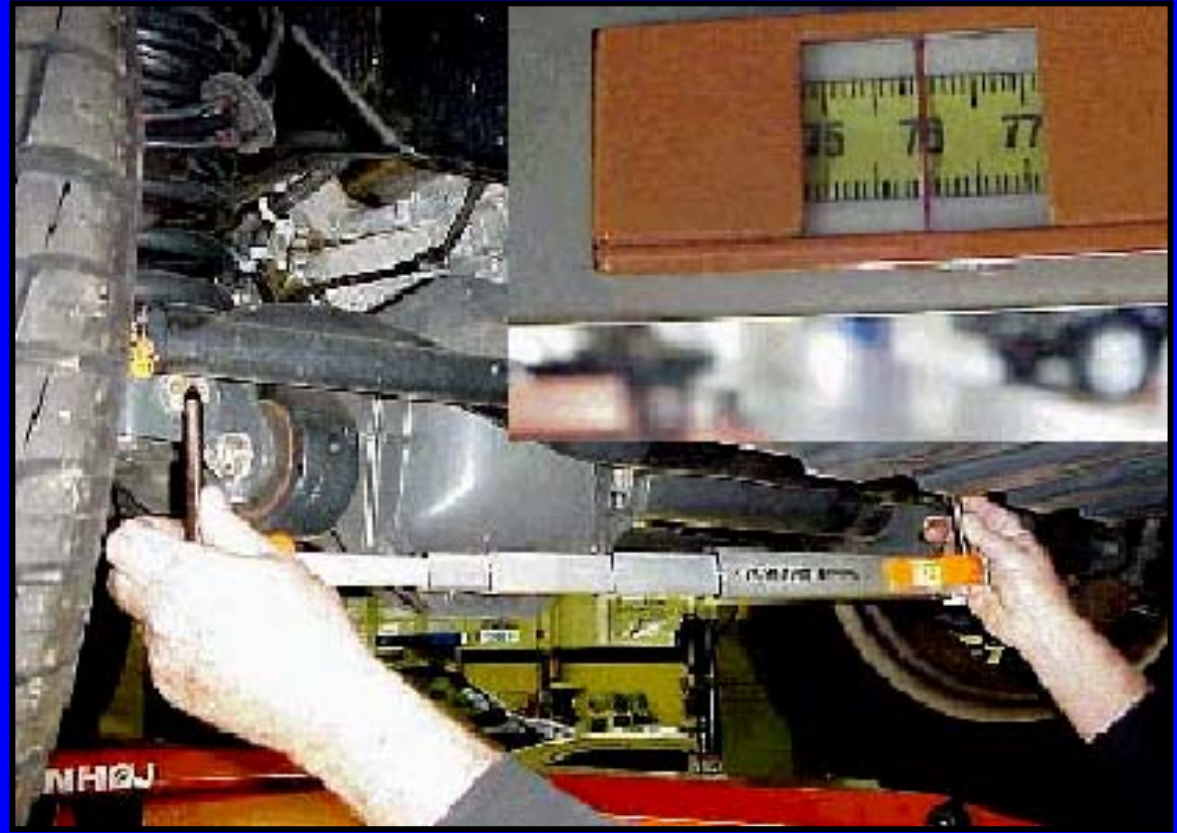
Panhard rod



# Panhard Rod

ESP, BAS and ESP Lights On:

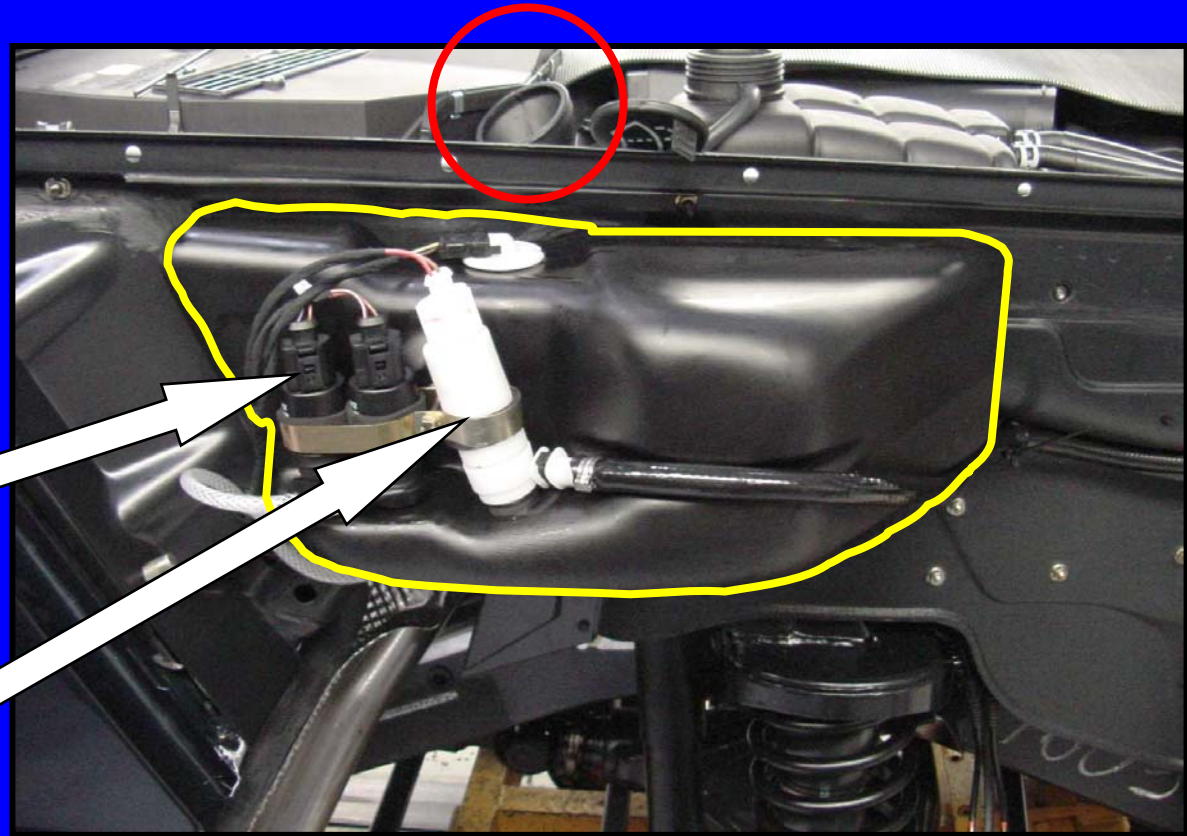
- Steering wheel off center may be due to a bent panhard rod
- Measure panhard rod
  - 760 mm
- Requires special tool
  - 201 589 07 63 00
  - 124 589 01 19 00



Reference Technical Bulletin T-B-33.15/09

# Washer Pumps & Reservoir

- Combined reservoir for windshields and headlamp cleaning system
- Filler neck disconnects from reservoir
- Black pumps are for front & rear windshield
- White pump for headlamps



Location: inside right front fender

# Sliding Roof

- Metal slide and tilt
- One touch open
- Summer opening & convenience closing with SmartKey
- Motor clutch and timing adjustment similar to W124

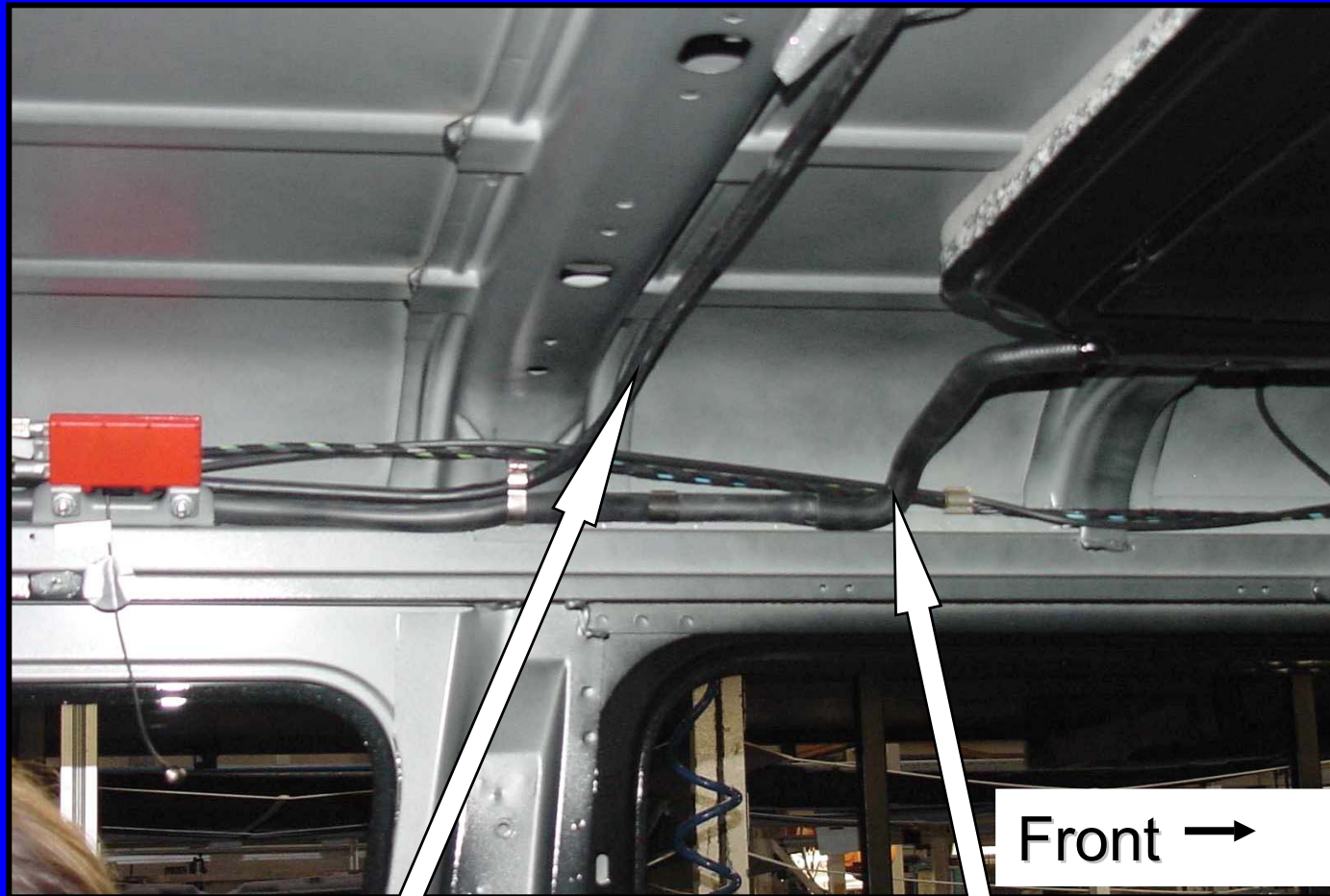
Check clutch - AR77.20-P-3009A  
Adjust clutch - AR77.20-P-3009-01A  
Adjust sunroof - AR77.20-P-1100A  
Fine adjustment - AR77.20-P-1100-02A



Location: motor located in left  
“D” pillar



# Sliding Roof



Drive cable

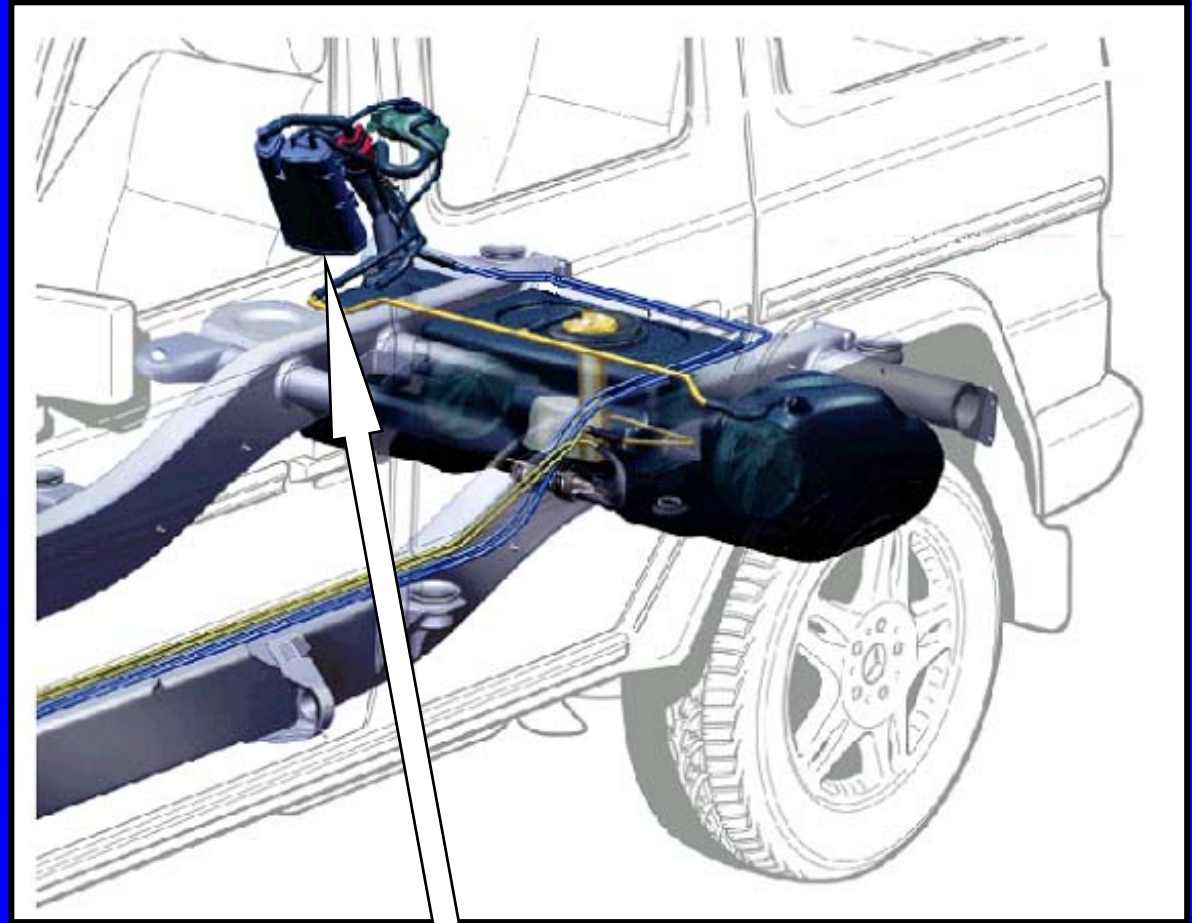
Drain hose

# Fuel System

Charcoal shut-off valve



Fuel expansion tank



Charcoal canister

# Fuel System



Rollover valve

Location: in right rear below rear side glass



# Fuel System



Access cover under rear carpet



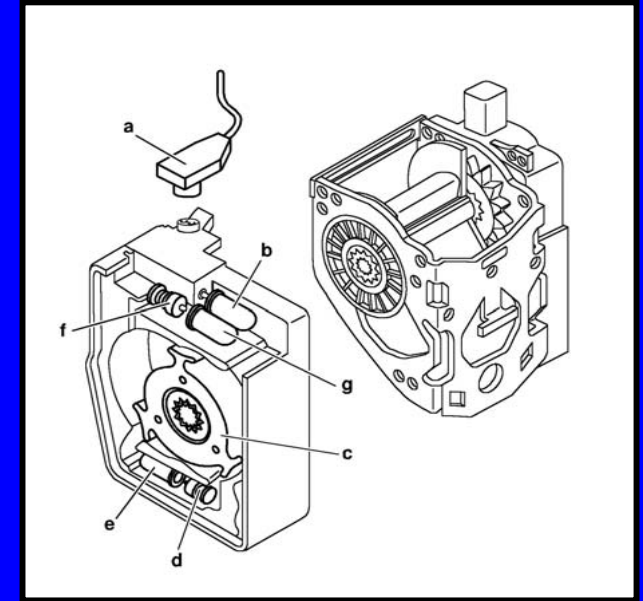
Emersion tube fuel sender



Location: at top of fuel tank

# Supplementary Restraint System

- Front & rear ETR's - wankel style with 3 stages
- Front airbags - single stage squib
- Steering wheel airbag - lifetime durability
- Passenger airbag - 15 year durability
- No door or window / curtain bags
- TELE AID



# 2003 Changes

- Auxiliary turn signals in mirror housing
- Redesigned steering wheel and column adjustment switch
- Heated steering wheel (leather section only)
- New trim covering for:
  - headlining
  - A pillar
  - parking brake handle
- Modified climate control icons
  - “AC OFF” replaces “EC”
  - changed air direction symbols
- New Options
  - Harman / Kardon sound system with subwoofer (E66)
  - Multicontour drivers seat (SM7)
  - Rear park assist (J44)
  - *designo* editions (Silver or Espresso)

