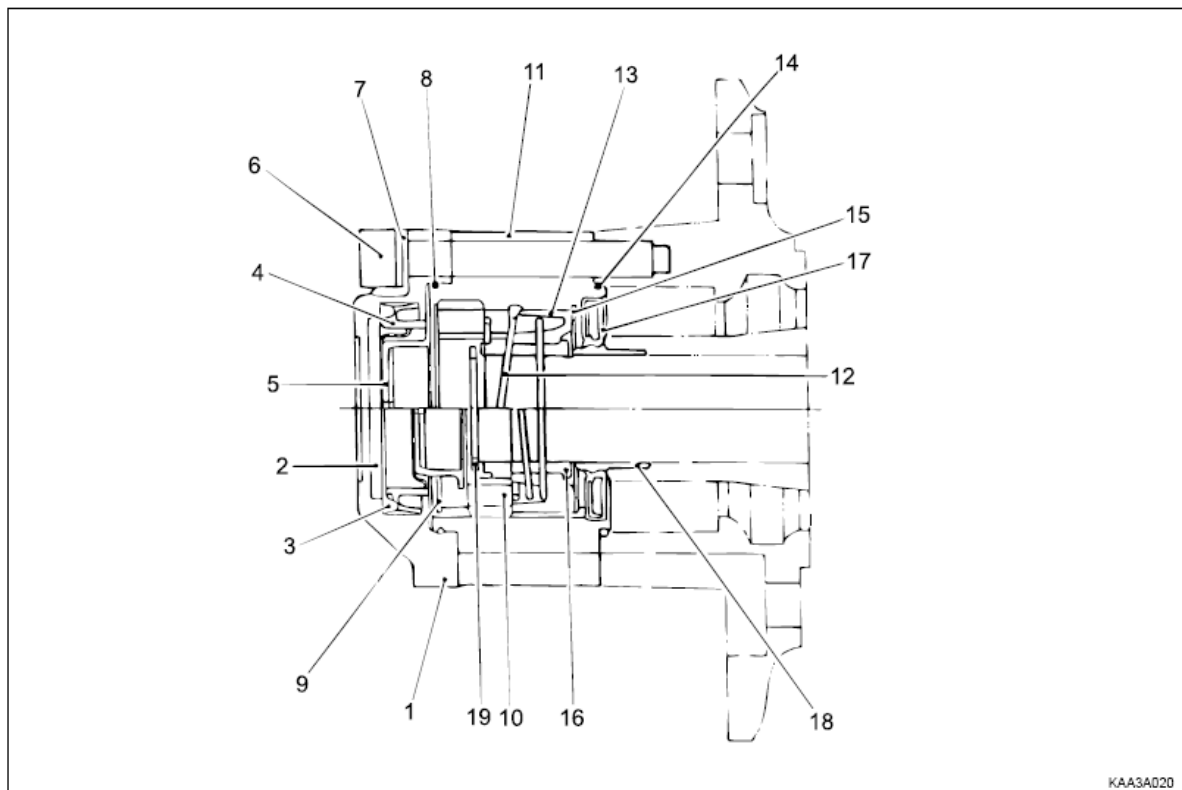


SsangYong Owners Club

The construction, disassembly and assembly of the Vacuum Hub.



- | | |
|----------------------|------------------------|
| 1 Cap | 11 Body |
| 2 Filter | 12 Return Spring |
| 3 Vacuum Diaphragm | 13 Bearing |
| 4 Diaphragm Retainer | 14 O-ring |
| 5 Piston | 15 Retaining Ring |
| 6 Bolt (M10) | 16 Inner Drive Gear |
| 7 Lock Washer | 17 Oil Seal |
| 8 O-ring | 18 Oil Seal Race |
| 9 Retaining Ring | 19 Axle Retaining Ring |
| 10 Clutch Ring | |



**Remove 6 bolts. You can do this after removing the wheel cover. It is not necessarily to jack up the car and remove the front wheel and brake calliper.
(I had these pictures already.)**



Remove Cap from body.



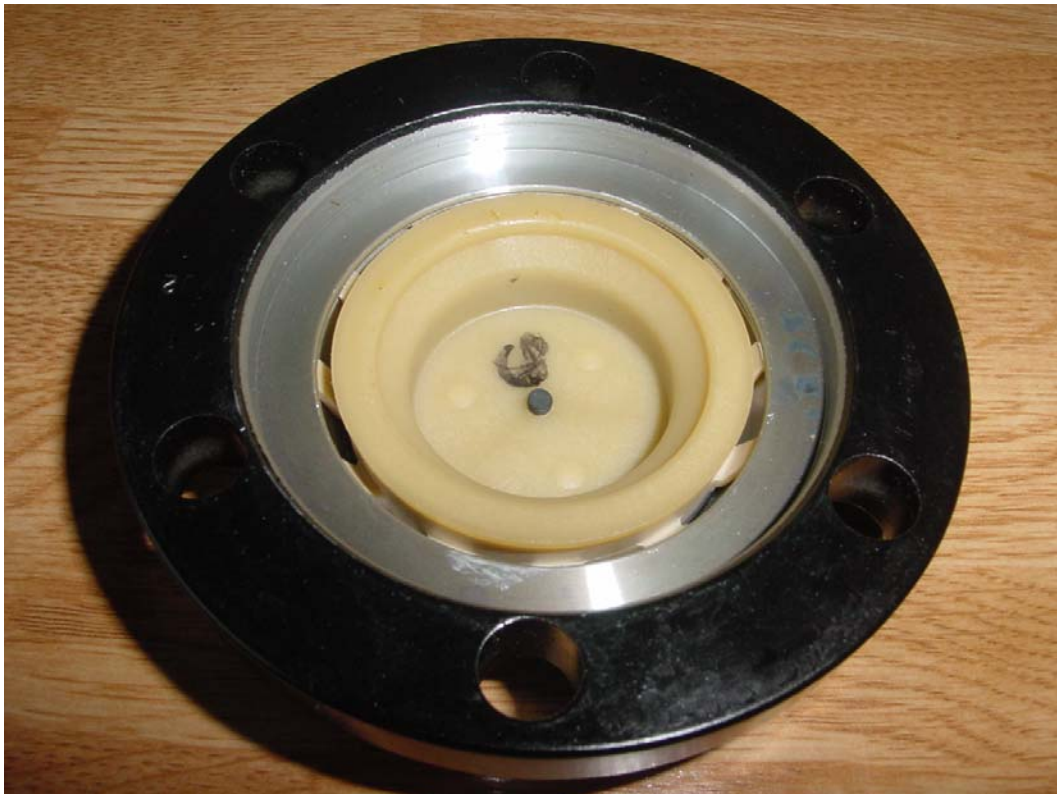
Remove axle retainer spring.



Pull vacuum hub body from axle hub.



Cap wit filter



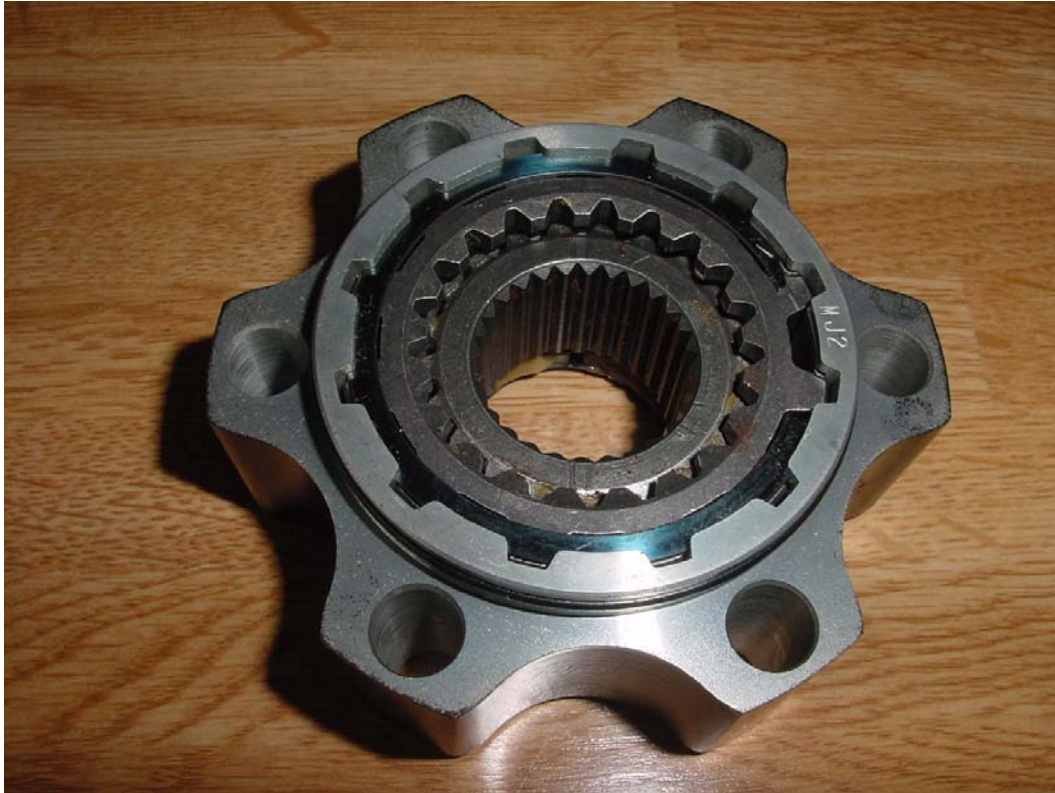
View Cap inside. The white part is the Diaphragm Retainer.



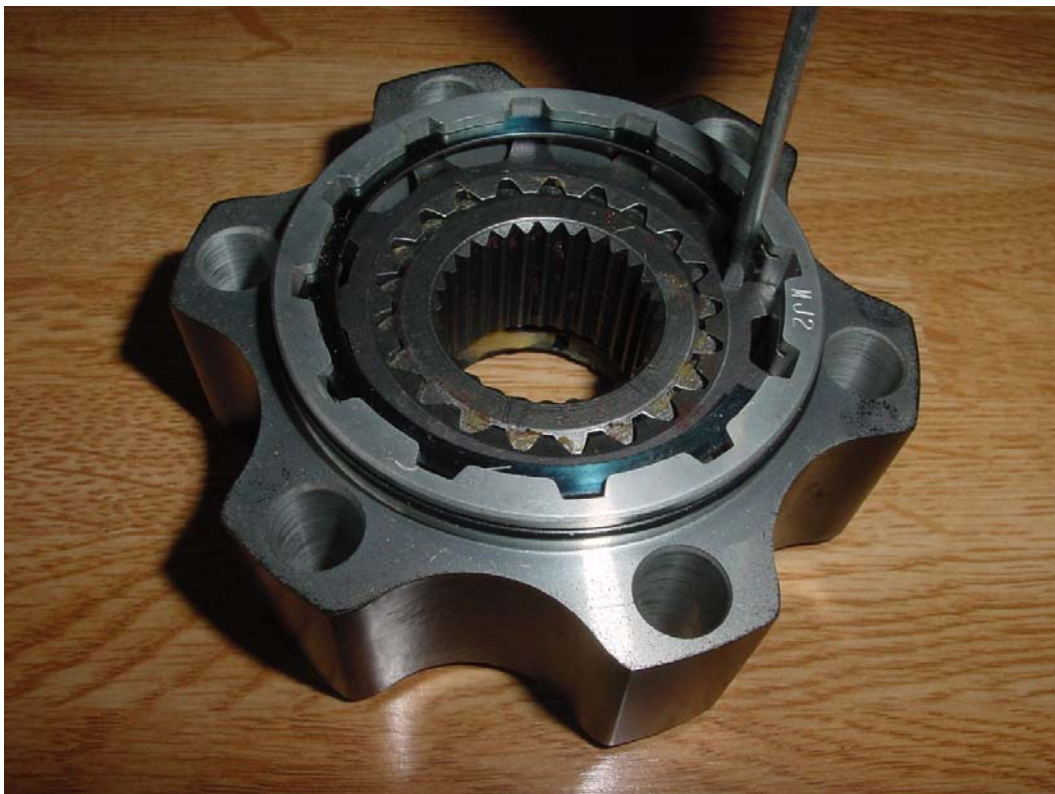
Under the Diaphragm Retainer sits the vacuum Diaphragm.



View on the back side of the hub.



View on the front side of the hub. The Clutch ring is released.



View on the front side of the hub. The Clutch ring is actuated.



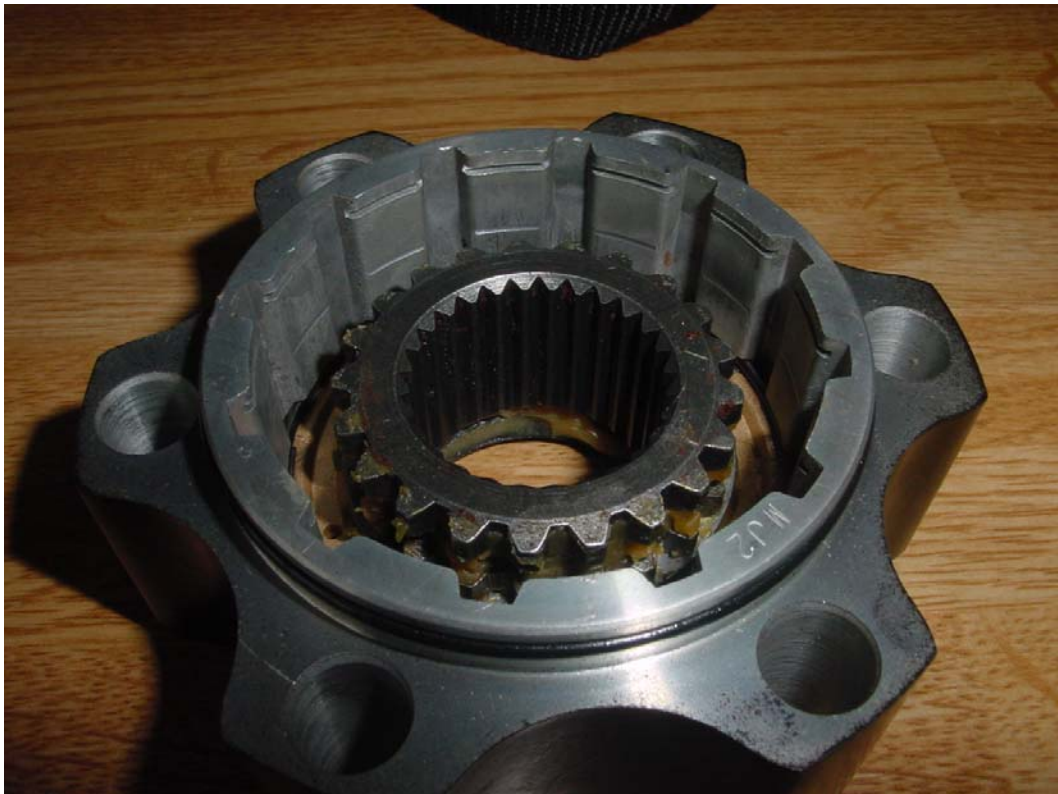
Retainigring



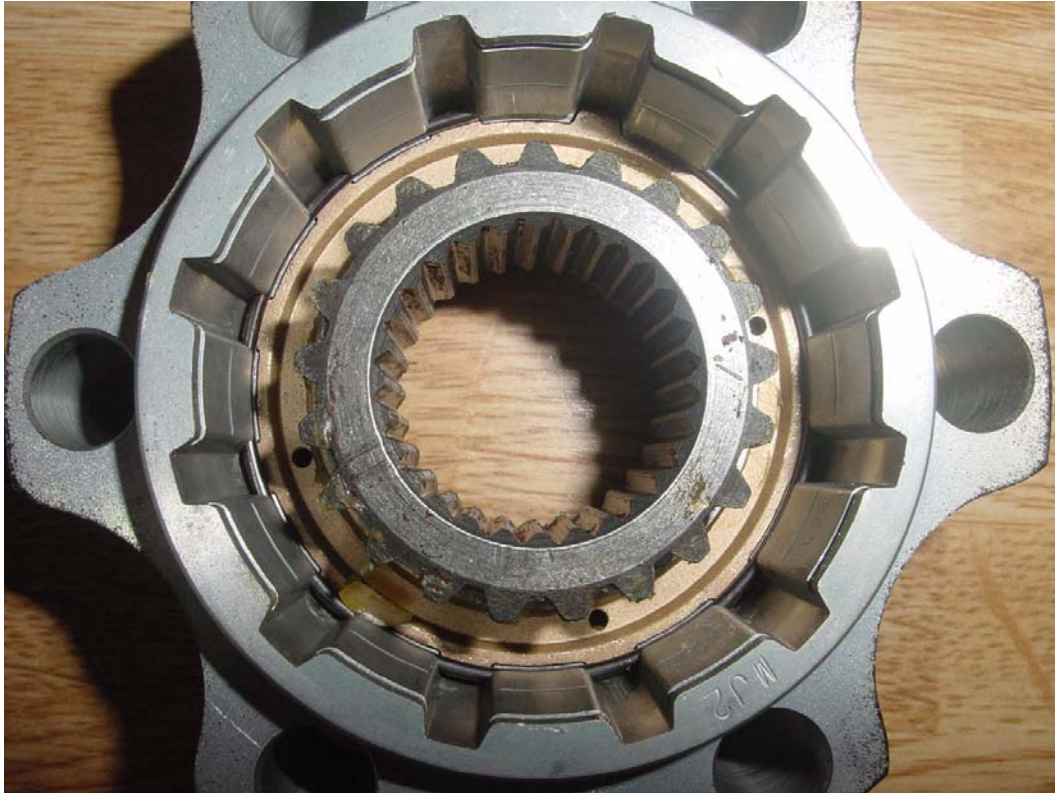
Clutch ring.



Return Spring



Hub body with Inner Drive Gear



Hub body with Inner Drive Gear and bearing. Locked by retaining ring.



Retaining ring



Inner drive gear with bearing.



Empty hub body.



Overview hub.



Retaining ring Inner Drive Gear.



Inner Drive Gear and bearing in parts.



Inner Drive Gear.



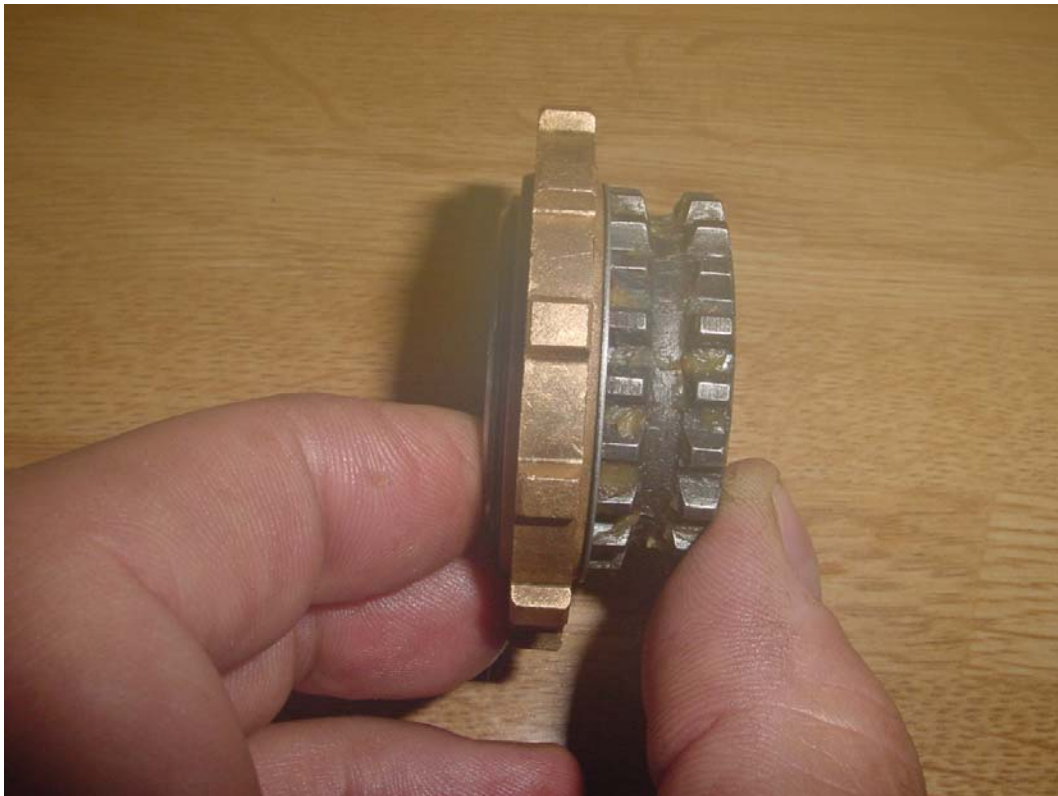
Inner Drive Gear and Washer.



Inner Drive Gear and bearing.



Inner Drive Gear and bearing locked by retainer ring.



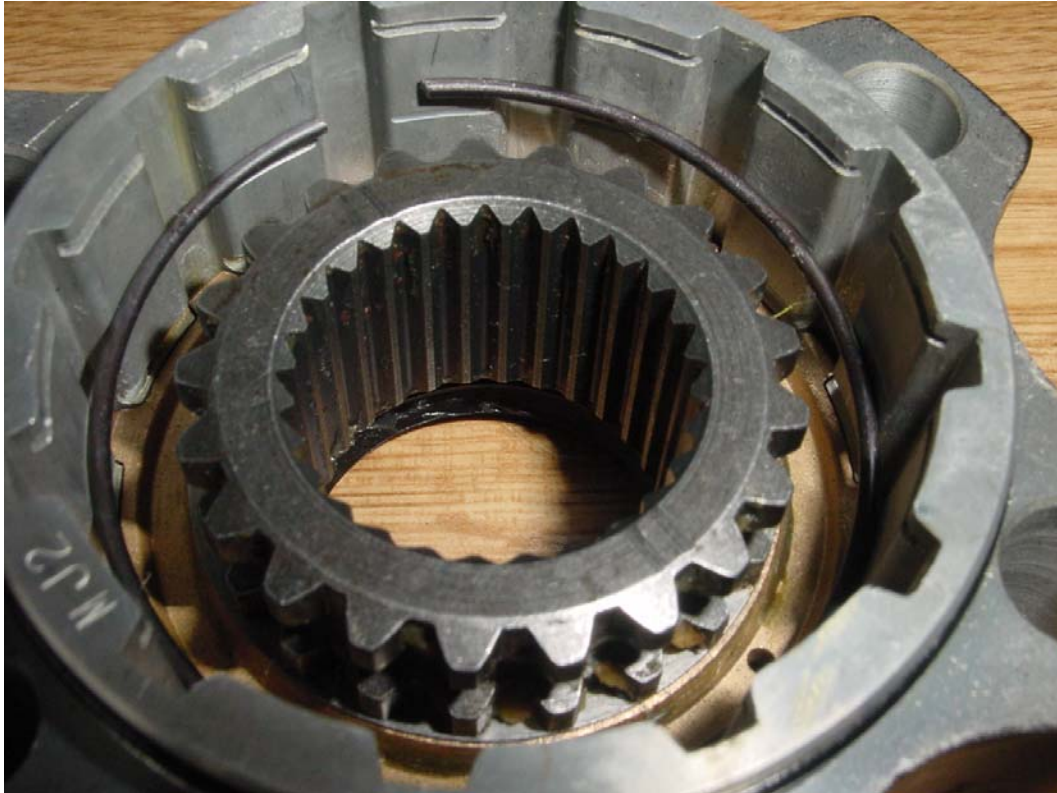
Inner Drive Gear and bearing side view.



Empty Body.



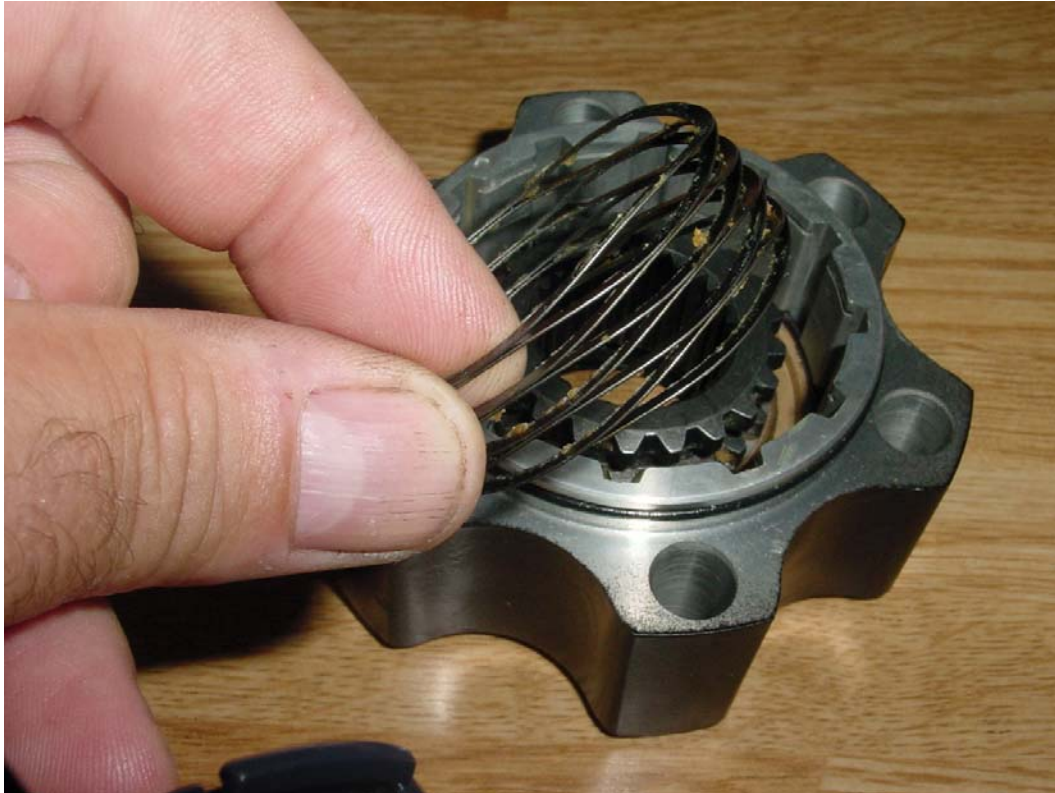
Place Inner Drive Gear and bearing in body.



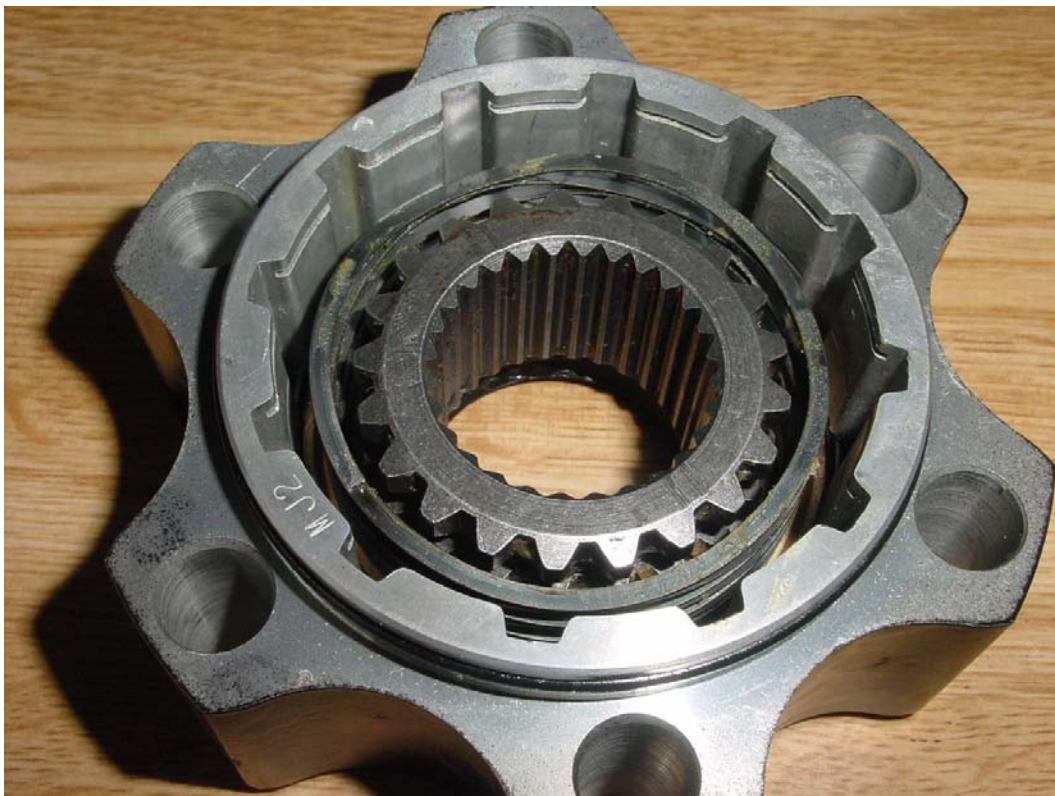
Lock the inner gear and bearing with retainer ring.



Retainer ring in place.



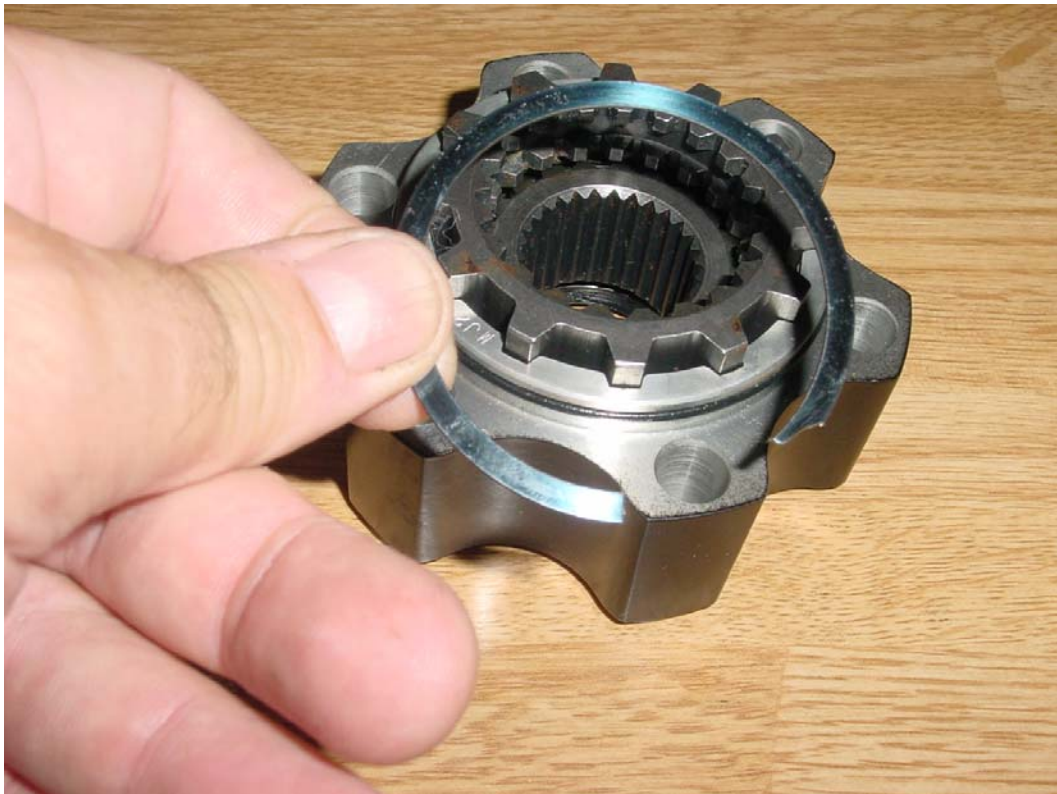
Place return spring.



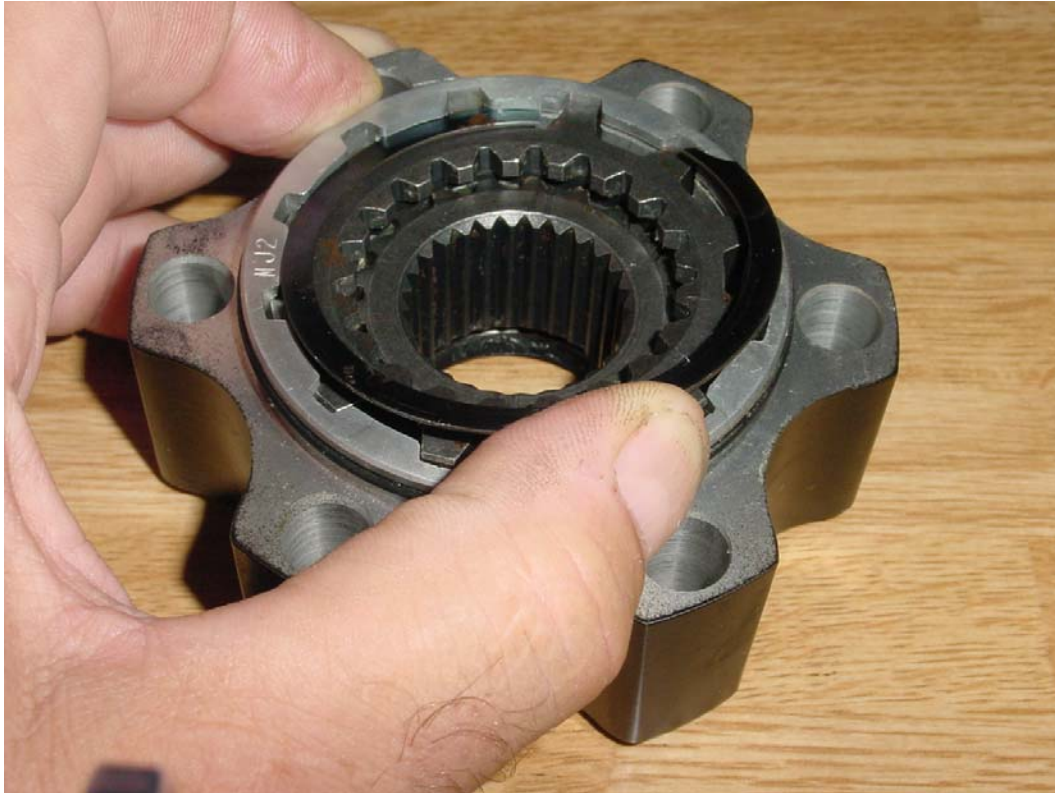
Return spring in place.



Place clutch ring.



Lock clutch ring with retainer ring



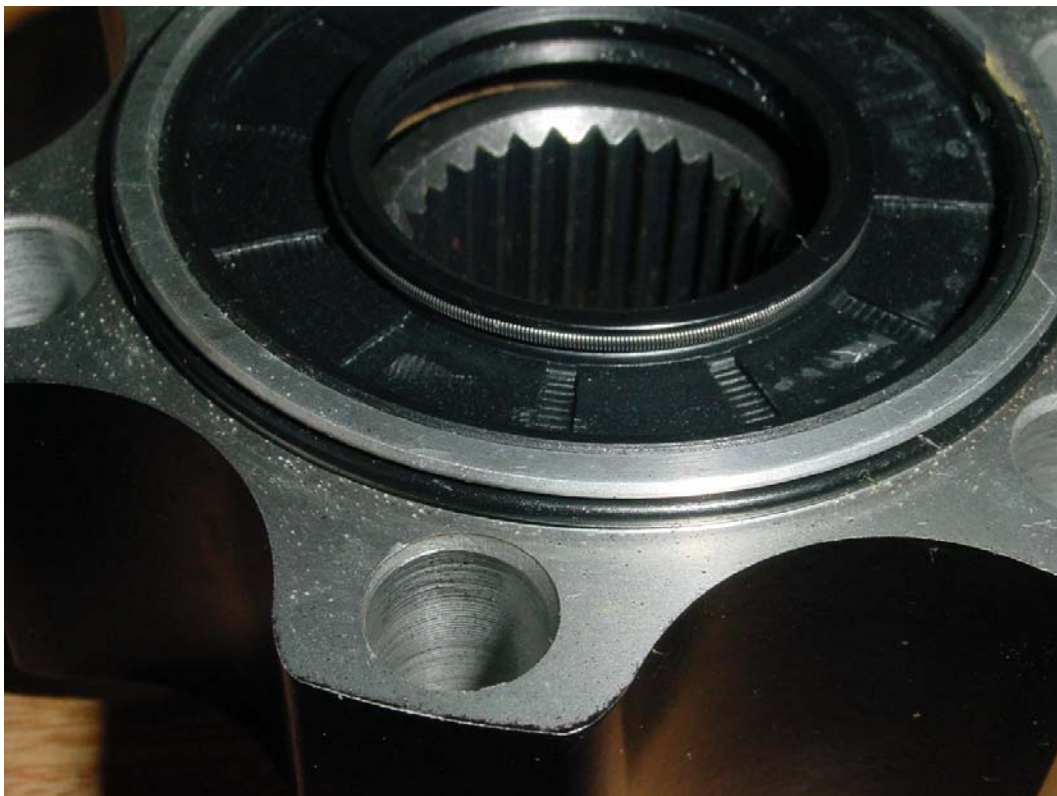
Lock clutch ring with retainer ring.



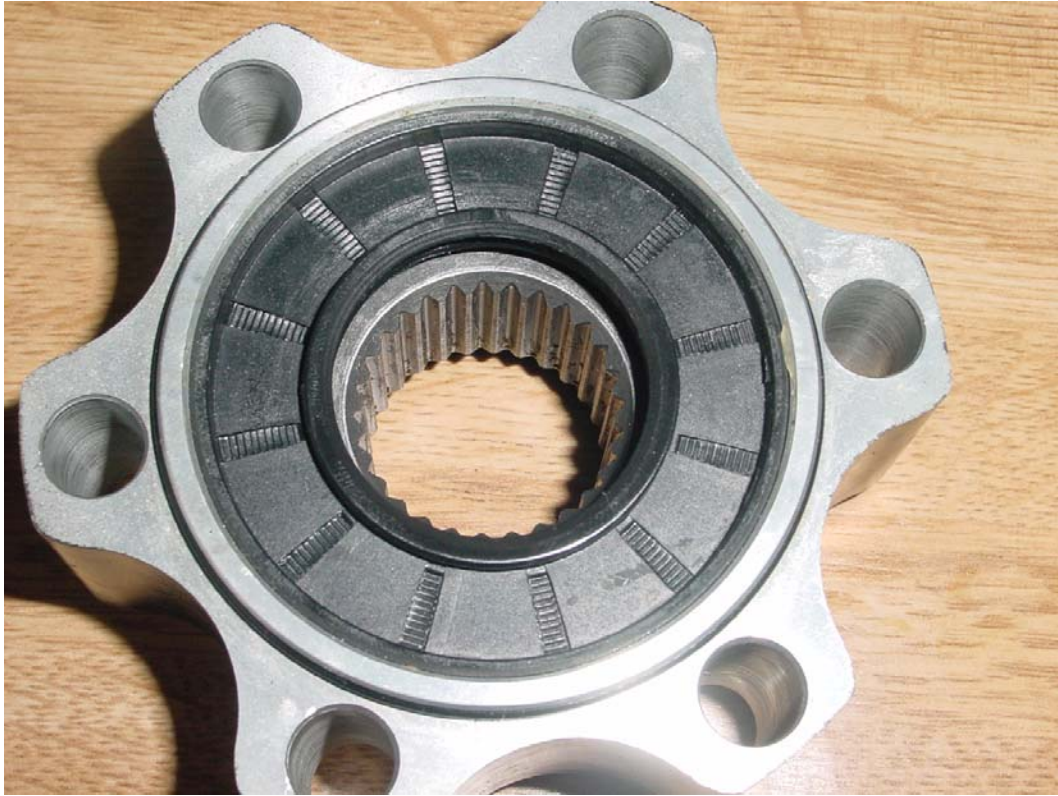
Retainer ring in place.



View at O-ring front side.



View at O-ring rear side.



View at rear side hub.



Warner Type Number.



Retainer ring and Oil Seal Race.